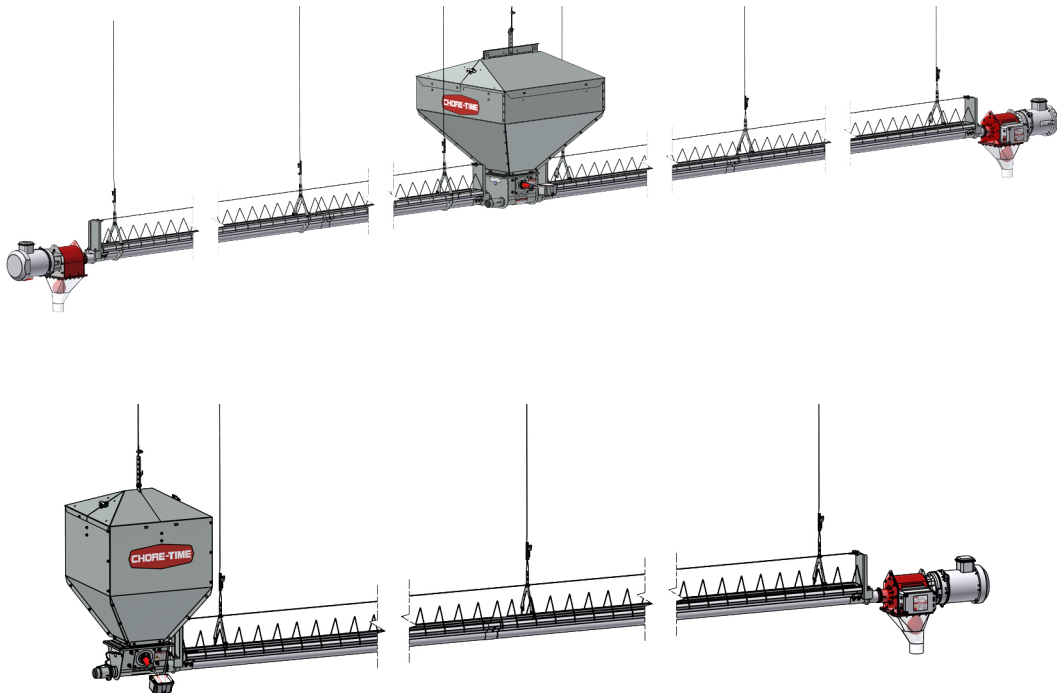


UltraMale™ Straight Line FLOOR Feeding System



Installation and Operators Manual

Installation and Operators Manual

For additional parts and information, contact your nearest Chore-Time distributor or representative.
Find your nearest distributor at: www.choretime.com/contacts

CTB, Inc.
PO Box 2000
Milford, Indiana 46542-2000 USA
Phone (574) 658-4101
Email: choretime@choretime.com
Internet: www.choretime.com

Contents

Topic	Page
Chore Time Limited Warranty	3
Introduction.	4
Feed requirement chart	4
Safety	5
Planning.	6
Hopper at the end (systems up to 350' [107 m]).	6
Hopper in the middle (systems over 350' [107 m])	7
Installation.	8
Suspension	8
End Caps	14
Installing the Boot.	15
Assembling the Control Unit (46800-1).	16
Installing the Control Unit	17
Auger Installation	18
Operation.	26
Running the system.	26
Troubleshooting	27
Parts Listing	28
Top Level Parts	28
Itemized Parts	29
Control Unit (46800-1).	30
Double Boot Assembly (57686).	31
Single Boot Assembly (57581).	32
Flag & Twin Boot Proximity Switch (34779)	32
Power Unit Assembly	33
Hanging Scale Part Number 46280	34

Chore Time Limited Warranty

Chore-Time Group, a division of CTB, Inc. (“Chore-Time”) warrants the new CHORE-TIME Straight Line Feeding Parts manufactured by Chore-Time to be free from defects in material or workmanship under normal usage and conditions, for One (1) year from the date of installation by the original purchaser (“Warranty”). Chore-Time provides for an extension of the aforementioned Warranty period (“Extended Warranty Period”) with respect to certain Product parts (“Component Part”) as set forth in the table below. If such a defect is determined by Chore-Time to exist within the applicable period, Chore-Time will, at its option, (a) repair the Product or Component Part free of charge, F.O.B. the factory of manufacture or (b) replace the Product or Component Part free of charge, F.O.B. the factory of manufacture. This Warranty is not transferable, and applies only to the original purchaser of the Product.

Component Part	Extended Warranty Period
RXL Fan (except motors and bearings)	Three (3) Years
TURBO® Fan (except motors and bearings)	Three (3) Years
TURBO® Fan fiberglass housing, polyethylene cone, and cast aluminum blade.	Lifetime of Product
TURBO® fan motor and bearings.	Two (2) Years
Chore-Time® Poultry Feeder Pan	Three (3) Years
Chore-Time® Rotating Centerless Augers (except where used in applications involving high moisture feed stuffs exceeding 17%)	Ten (10) Years
Chore-Time Steel Auger Tubes	Ten (10) Years
ULTRAFLO® Breeder Feeding System auger and feed trough.	Five (5) Years
ULTRAPAN® Feeding System augers.	Five (5) Years

CONDITIONS AND LIMITATIONS

THIS WARRANTY CONSTITUTES CHORE-TIME’S ENTIRE AND SOLE WARRANTY AND CHORE-TIME EXPRESSLY DISCLAIMS ANY AND ALL OTHER WARRANTIES, INCLUDING, BUT NOT LIMITED TO, EXPRESS AND IMPLIED WARRANTIES, INCLUDING, WITHOUT LIMITATION, WARRANTIES AS TO MERCHANTABILITY OR FITNESS FOR PARTICULAR PURPOSES. CHORE-TIME shall not be liable for any direct, indirect, incidental, consequential or special damages which any purchaser may suffer or claim to suffer as a result of any defect in the Product. Consequential or Special Damages as used herein include, but are not limited to, lost or damaged products or goods, costs of transportation, lost sales, lost orders, lost income, increased overhead, labor and incidental costs, and operational inefficiencies. *Some jurisdictions prohibit limitations on implied warranties and/or the exclusion or limitation of such damages, so these limitations and exclusions may not apply to you. This warranty gives the original purchaser specific legal rights. You may also have other rights based upon your specific jurisdiction.*

Compliance with federal, state and local rules which apply to the location, installation and use of the Product are the responsibility of the original purchaser, and CHORE-TIME shall not be liable for any damages which may result from non-compliance with such rules.

The following circumstances shall render this Warranty void:

- Modifications made to the Product not specifically delineated in the Product manual.
- Product not installed and/or operated in accordance with the instructions published by the CHORE-TIME.
- All components of the Product are not original equipment supplied by CHORE-TIME.
- Product was not purchased from and/or installed by a CHORE-TIME authorized distributor or certified representative.
- Product experienced malfunction or failure resulting from misuse, abuse, mismanagement, negligence, alteration, accident, or lack of proper maintenance, or from lightning strikes, electrical power surges or interruption of electricity.
- Product experienced corrosion, material deterioration and/or equipment malfunction caused by or consistent with the application of chemicals, minerals, sediments or other foreign elements.
- Product was used for any purpose other than for the care of poultry and livestock.

The Warranty and Extended Warranty may only be modified in writing by an officer of CHORE-TIME. CHORE-TIME shall have no obligation or responsibility for any representations or warranties made by or on behalf of any distributor, dealer, agent or certified representative.

Effective: **April, 2014**

Introduction

Chore-Time has designed the UltraMale™ Straight Line Feeding System to be installed in Broiler Breeder Houses to feed Male Poultry.

The system is designed to feed 2 birds per foot (6.56 birds per meter) of trough.

Chore-Time recommends using a Chore-Tronics® 3 Breeder Edition Control to manage feeding times. See **Chore-Time Manual MT2484** for Installing and operating the Chore-Tronics® 3 Breeder Edition Control.

Feed requirement chart

Two Sided Eating (Birds both sides of Trough)

Feeder Length	# of Male Birds	lbs/kg Feed in Hopper	Hopper Size/ Chore-Time Part Number
200' [61m]	400	132 lbs. [60 kg]	200 lbs. Hopper CT Part No. 28358
240' [73.2 m]	440	146 lbs. [66 kg]	
280' [85.3 m]	480	159 lbs. [72 kg]	
300' [91.4 m]	600	198 lbs. [90 kg]	
340' [103.6 m]	680	225 lbs. [102 kg]	300 lbs. Hopper CT Part No. 28360
380' [115.8 m]	760	251 lbs. [114 kg]	
400' [121.9 m]	800	265 lbs. [120 kg]	
440' [134.1 m]	880	291 lbs. [132 kg]	
480' [146.3 m]	960	317 lbs. [144 kg]	with Extension CT Part No. 36319
500' [152.4 m]	1000	331 lbs. [150 kg]	
540' [164.6 m]	1080	357 lbs. [162 kg]	
580' [176.8 m]	1160	384 lbs. [174 kg]	
600' [182.9 m]	1200	397 lbs. [180 kg]	

Based on .33 lbs. [150 g] of feed per bird and two birds per foot [30cm] eating using single or twin boot.

Single Sided Eating (Birds on one side of Trough)

Feeder Length	# of Male Birds	lbs/kg Feed in Hopper	Hopper Size/ Chore-Time Part Number
200' [61m]	400	132 lbs. [60 kg]	200 lbs. Hopper CT Part No. 28358
240' [73.2 m]	440	146 lbs. [66 kg]	
280' [85.3 m]	480	159 lbs. [72 kg]	
300' [91.4 m]	600	198 lbs. [90 kg]	
340' [103.6 m]	680	225 lbs. [102 kg]	300 lbs. Hopper CT Part No. 28360
380' [115.8 m]	760	251 lbs. [114 kg]	
400' [121.9 m]	800	265 lbs. [120 kg]	
440' [134.1 m]	880	291 lbs. [132 kg]	
480' [146.3 m]	960	317 lbs. [144 kg]	300 lbs. Hopper CT Part No. 28360 with Extension CT Part No. 36319
500' [152.4 m]	1000	331 lbs. [150 kg]	
540' [164.6 m]	1080	357 lbs. [162 kg]	
580' [176.8 m]	1160	384 lbs. [174 kg]	
600' [182.9 m]	1200	397 lbs. [180 kg]	

Based on spacing need of 8 inches [20 cm] of feed per bird and .33 lbs. [150 g] of feed per bird.

Safety

Caution, Warning, and Danger Decals have been placed on the equipment to warn of potentially dangerous situations. Care should be taken to keep this information intact and easy to read at all times. Replace missing or damaged safety decals immediately.

Safety–Alert Symbol



This is a safety–alert symbol. When you see this symbol on your equipment, be alert to the potential for personal injury. This equipment is designed to be installed and operated as safely as possible...however, hazards do exist.

Understanding Signal Words

Signal words are used in conjunction with the safety–alert symbol to identify the severity of the warning.



DANGER—Indicates an imminently hazardous situation which, if not avoided, **WILL** result in death or serious injury.



WARNING—Indicates a potentially hazardous situation which, if not avoided, **COULD** result in death or serious injury.



CAUTION—Indicates a hazardous situation which, if not avoided, **MAY** result in minor or moderate injury.

Follow Safety Instructions

Carefully read all safety messages in this manual and on your equipment safety signs. Follow recommended precautions and safe operating practices.

Keep safety signs in good condition. Replace missing or damaged safety signs.

Decal Descriptions

DANGER: Moving Auger

This decal is placed on the End Cap Weldment and Clean-out cover. Severe personal injury will result, if the electrical power is not disconnected, prior to servicing the equipment.



DANGER: Electrical Hazard

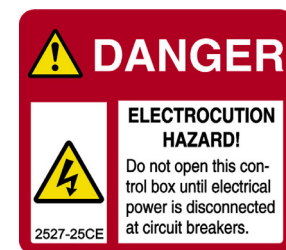
- Disconnect electrical power before inspecting or servicing equipment unless maintenance instructions specifically state otherwise.

- Ground all electrical equipment for safety.

- All electrical wiring must be done by a qualified electrician in accordance with local and national electric codes.

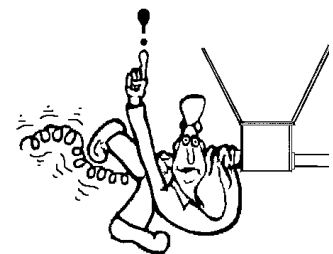
- Ground all non-current carrying metal parts to guard against electrical shock.

- Electrical disconnects and over current protection are not supplied with the equipment.



DANGER: Springing Auger

Use caution when working with Auger. Springing Auger may cause personal injury.

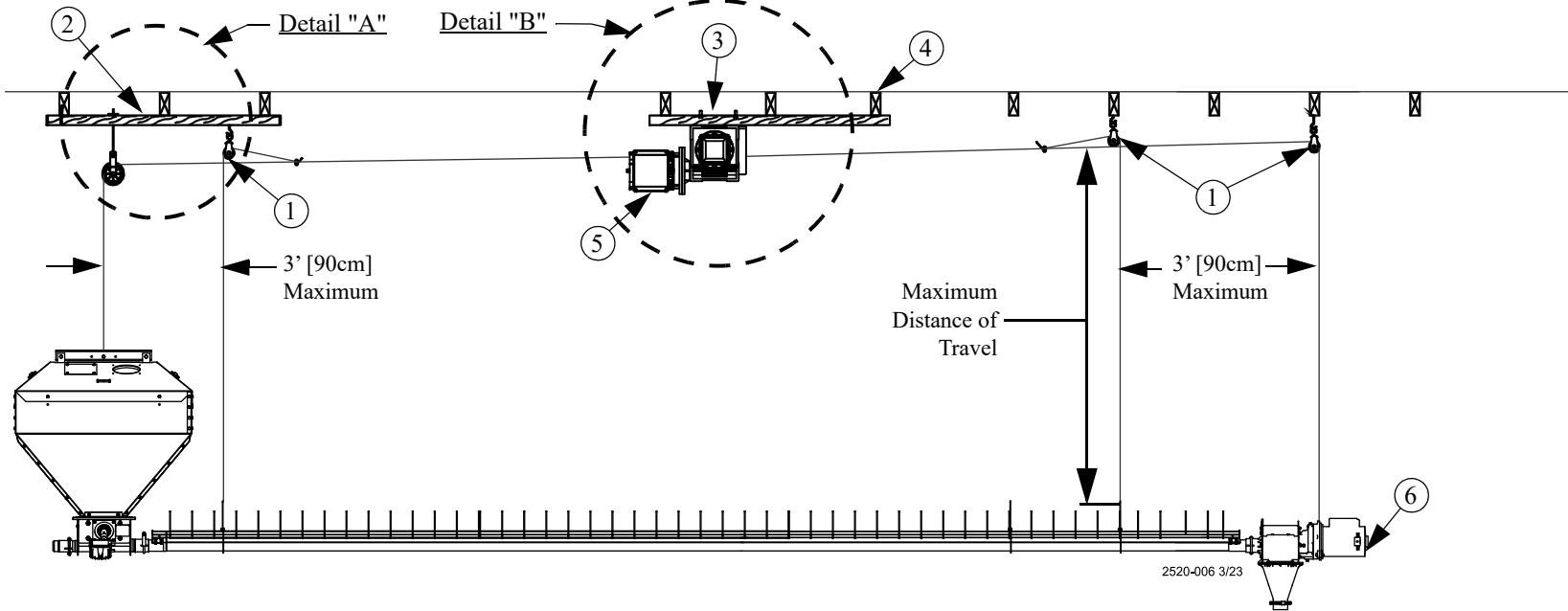


Attention: Read the Manual

See the manual for detailed installation instructions.

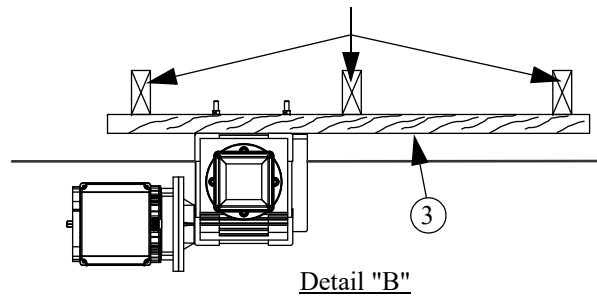
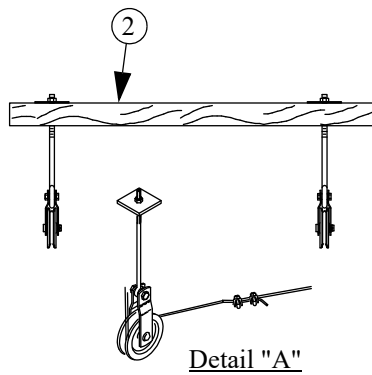


Hopper at the end (systems up to 350' [107 m])



2520-006 3/23

Wood Framed House: Requires Support Spanning 3 Trusses
Steel Framed House: Requires Support Spanning 2 Trusses



Item	Description
1	Swivel Pulley
2	Hopper Support
3	Winch Support
4	Roof Truss
5	Winch
6	Power Unit

Figure 1. Suspension for systems up to 350' [107 m]

Hopper in the middle (systems over 350' [107 m])

MF2520A

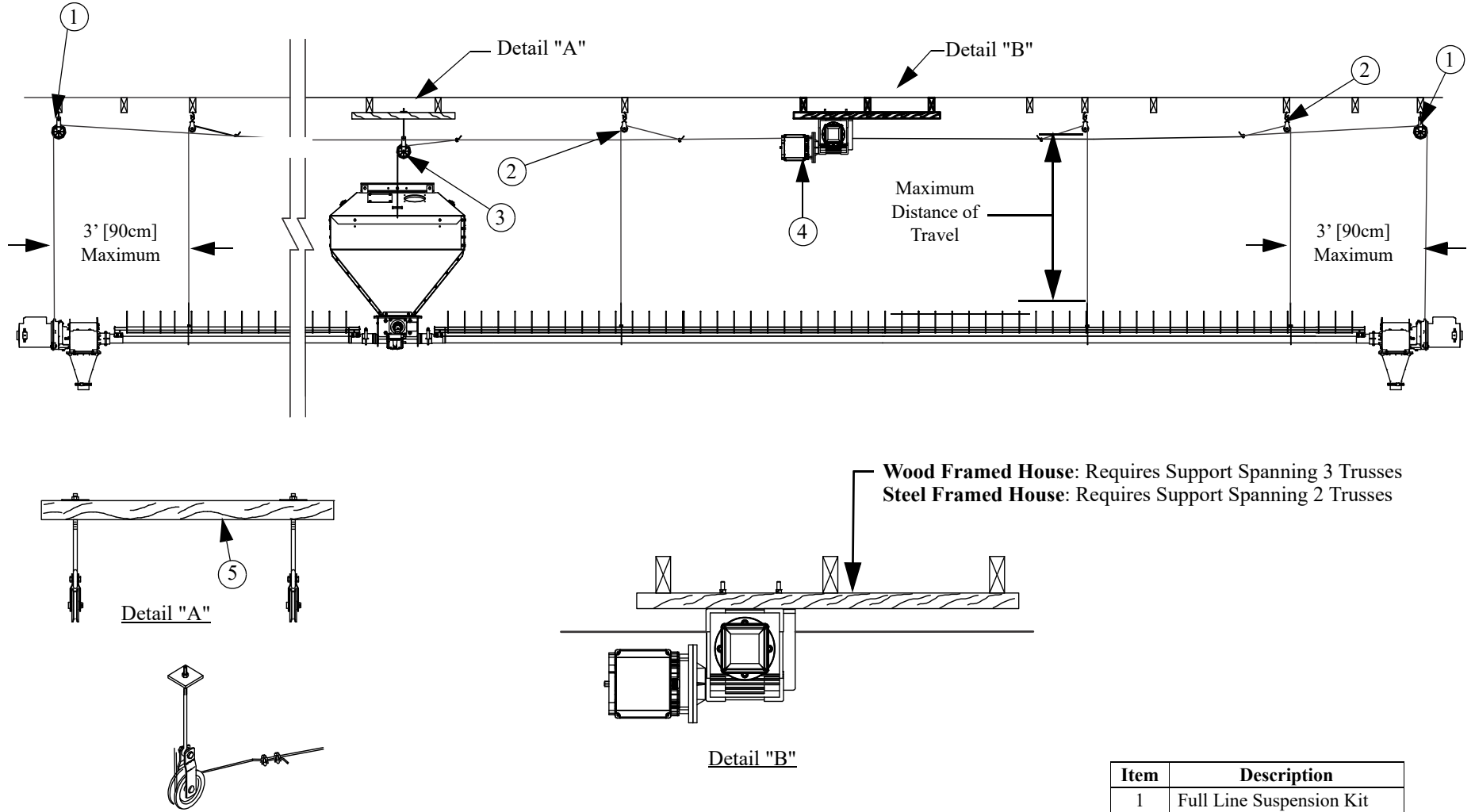


Figure 2. Suspension for systems over 350' [107 m]

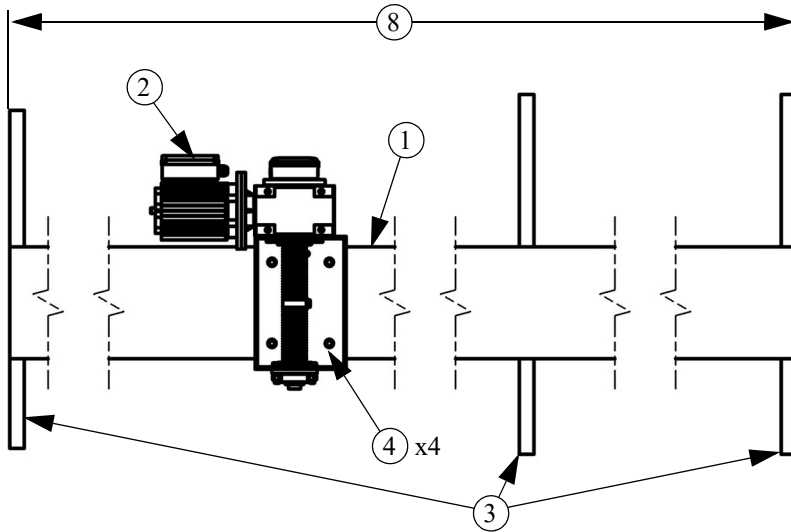
Item	Description
1	Full Line Suspension Kit
2	Swivel Pulley
3	3.5" [8.9 cm] Pulley
4	Power Winch
5	Hopper Support

Installation

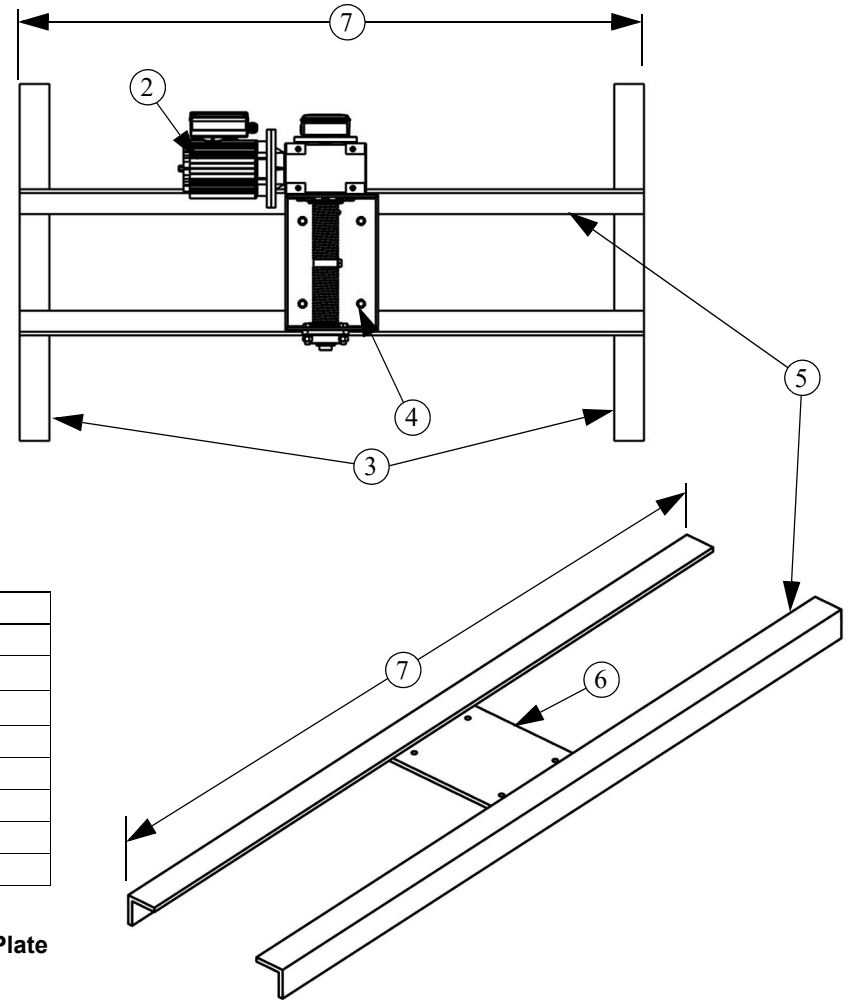
Suspension

Power Lift Winch Installation

Wood Truss Installation



Steel Truss Installation



Item	Description
1	Power Lift Winch Support: 2" x 12" [50 x 30.48 cm] board spanning at least 3 trusses.
2	Strap Winch
3	Truss
4	Bolt, Washer, and Locknut
5	Angle Iron: Long enough to span 2 Trusses.
6	3/8" [9.5mm] Thick Steel Mounting Plate
7	Long enough to span 2 Trusses
8	Long enough to span 3 Trusses

Figure 3. Attaching Winch to Winch Support/Weld Angle Iron to Steel Mounting Plate

Attaching Winch Support (Wood Truss)

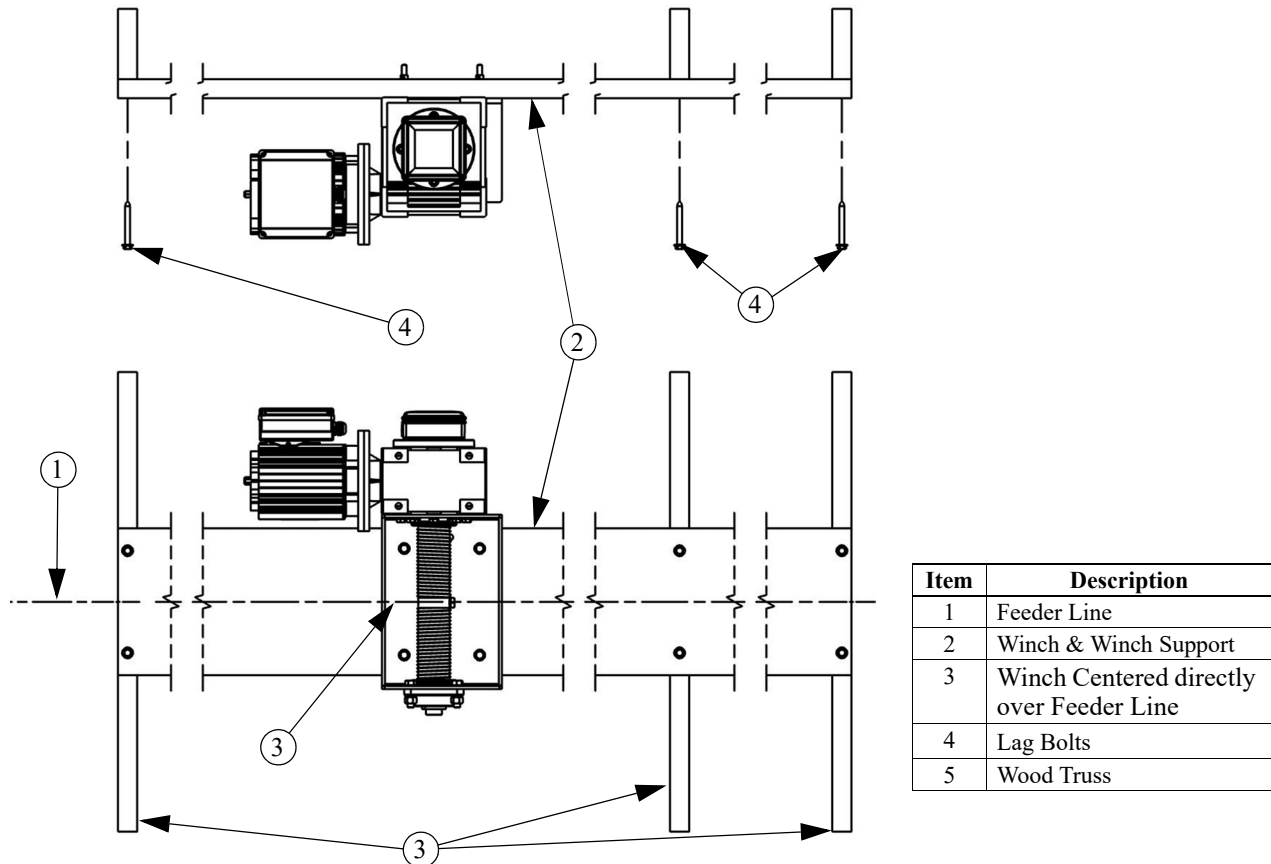


Figure 4. Mounting the Winch (Wood Truss)

Attaching Winch Support (Steel Truss)

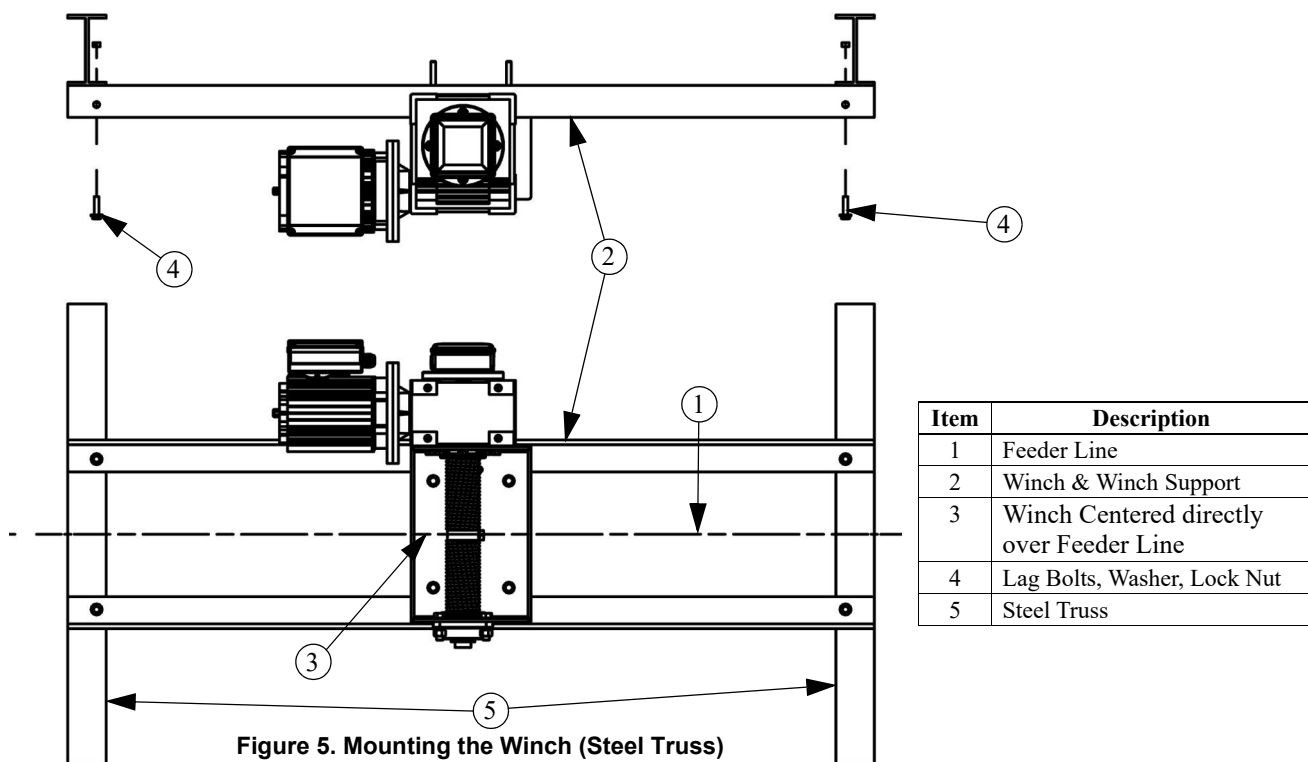


Figure 5. Mounting the Winch (Steel Truss)

Suspension Bracket Installation

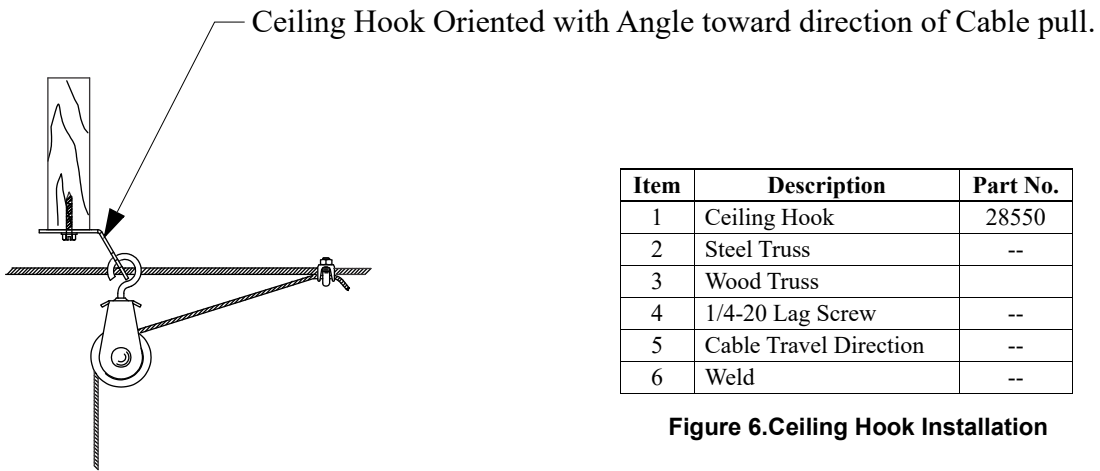
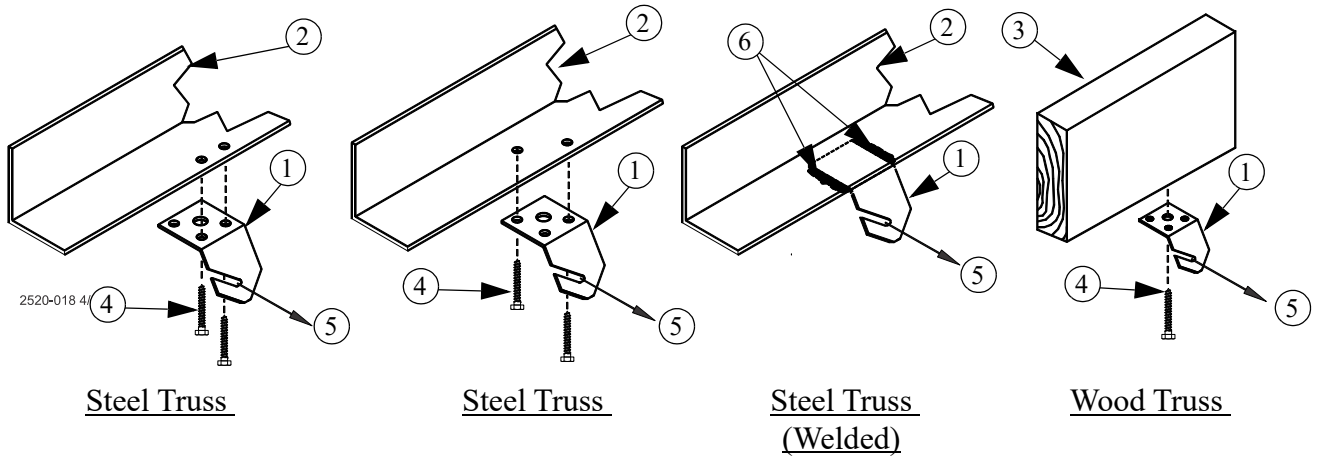
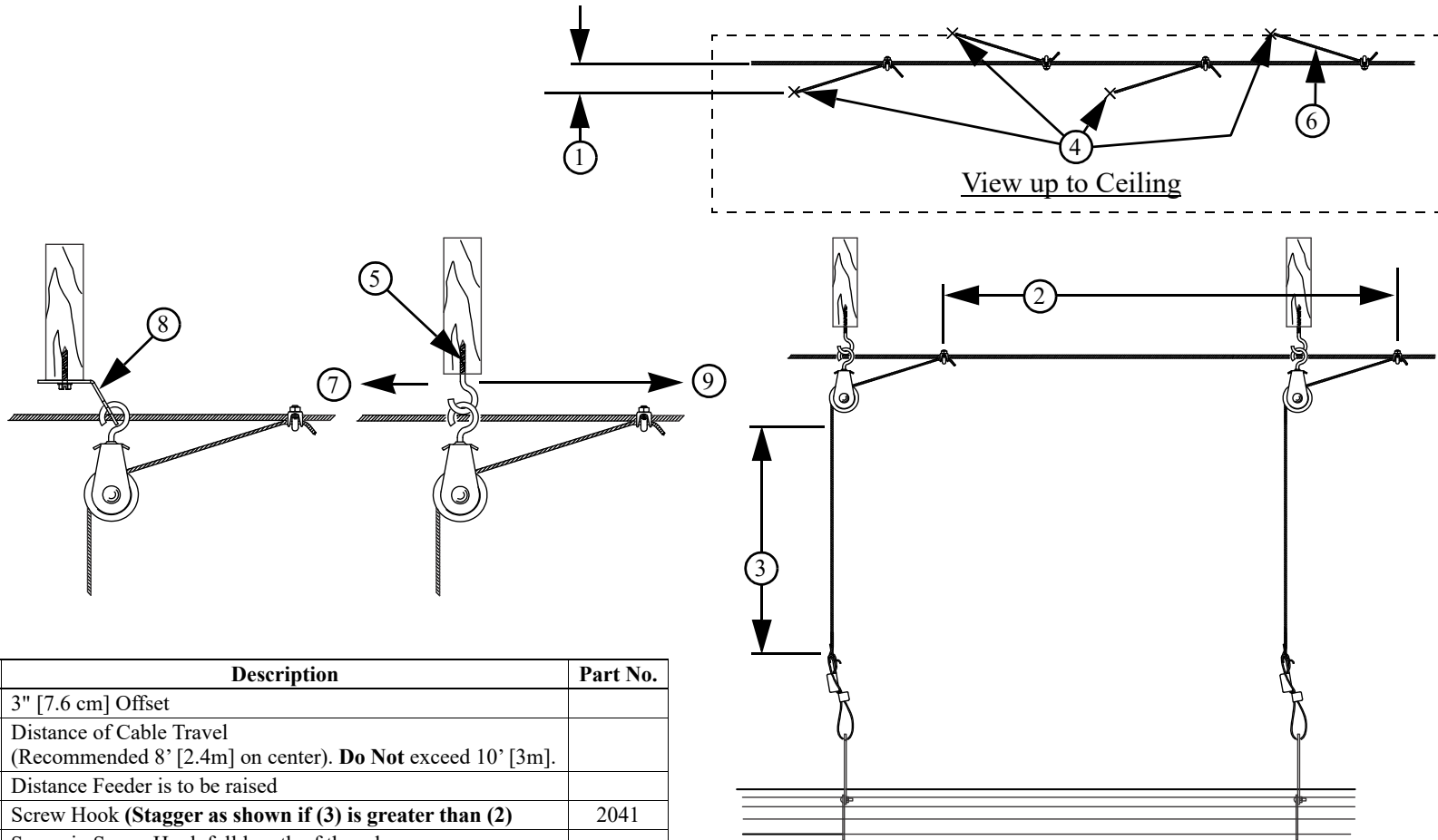


Figure 6.Ceiling Hook Installation

Screw Hook/Pulley Installation

Install Screw Hooks at locations shown in (See Figure 7.).

If distance raised (3) is greater than (2) then stagger Screw hooks (4) as shown.



2520-017 4/23

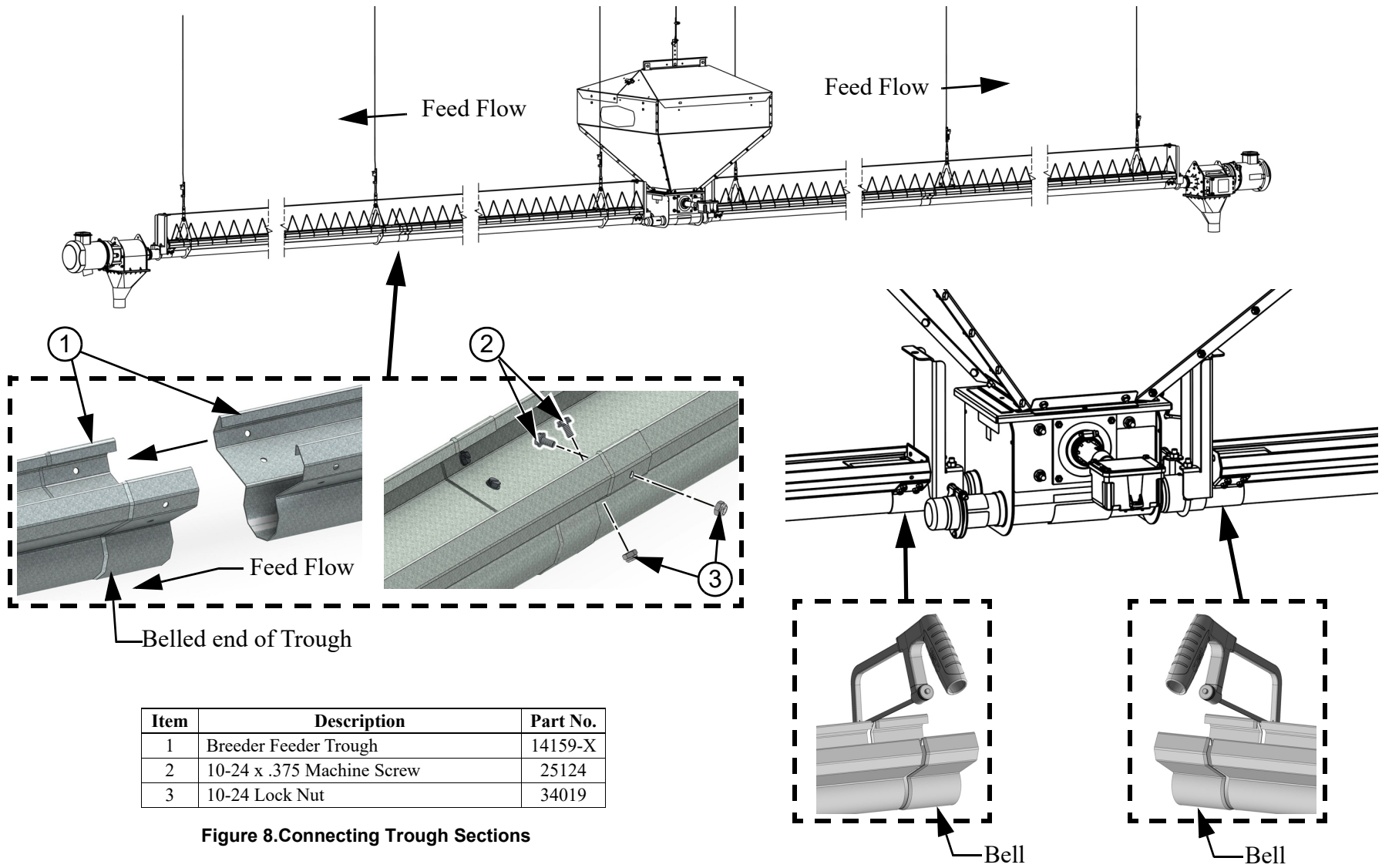
Item	Description	Part No.
1	3" [7.6 cm] Offset	
2	Distance of Cable Travel (Recommended 8' [2.4m] on center). Do Not exceed 10' [3m].	
3	Distance Feeder is to be raised	
4	Screw Hook (Stagger as shown if (3) is greater than (2))	2041
5	Screw in Screw Hook full length of threads.	
6	3/32 [2mm] Drop Cable	
7	Screw Hook Opening facing opposite direction of travel.	
8	Ceiling Hook Flange angled toward direction of travel.	
9	Winch End (Direction of Travel).	

Figure 7.Screw Hook Installation

12 Trough Connections

Boot, End Caps, and Hangers shown for reference only; Do not install or suspend at this time. System with Hopper in Center shown.

1. Cut off the Belled end of the 1st piece of Trough.
2. Trough Sections should be installed so that Feed flows from Non-Belled End toward the Belled end.
3. Fasten Trough sections together with #10-24 Machine Screws (**Item 2**) and 10-24 Lock Nuts (**Item 3**).



Item	Description	Part No.
1	Breeder Feeder Trough	14159-X
2	10-24 x .375 Machine Screw	25124
3	10-24 Lock Nut	34019

Figure 8.Connecting Trough Sections

13 Suspending Trough

1. Install Grills (**Item 1**) on the Trough.
2. Adequate overhead structure must be provided to support the weight of the Feeder, Birds, Power Units, etc.
3. Always line up Drop Lines with Trusses. If attaching drop lines to Trusses is impossible, adequate load bearing structure must be used.
4. Drops are required within 12" of each end of the Trough, and within 12" [30.4 cm] of each Trough joint. (See **Figure 9.**)
5. Drop Lines at the Boot location will have to be located such that they do not interfere with the Hopper.
6. Install Trough Hangers, Hanger Extensions, and Adjustment Levelers **as shown.**

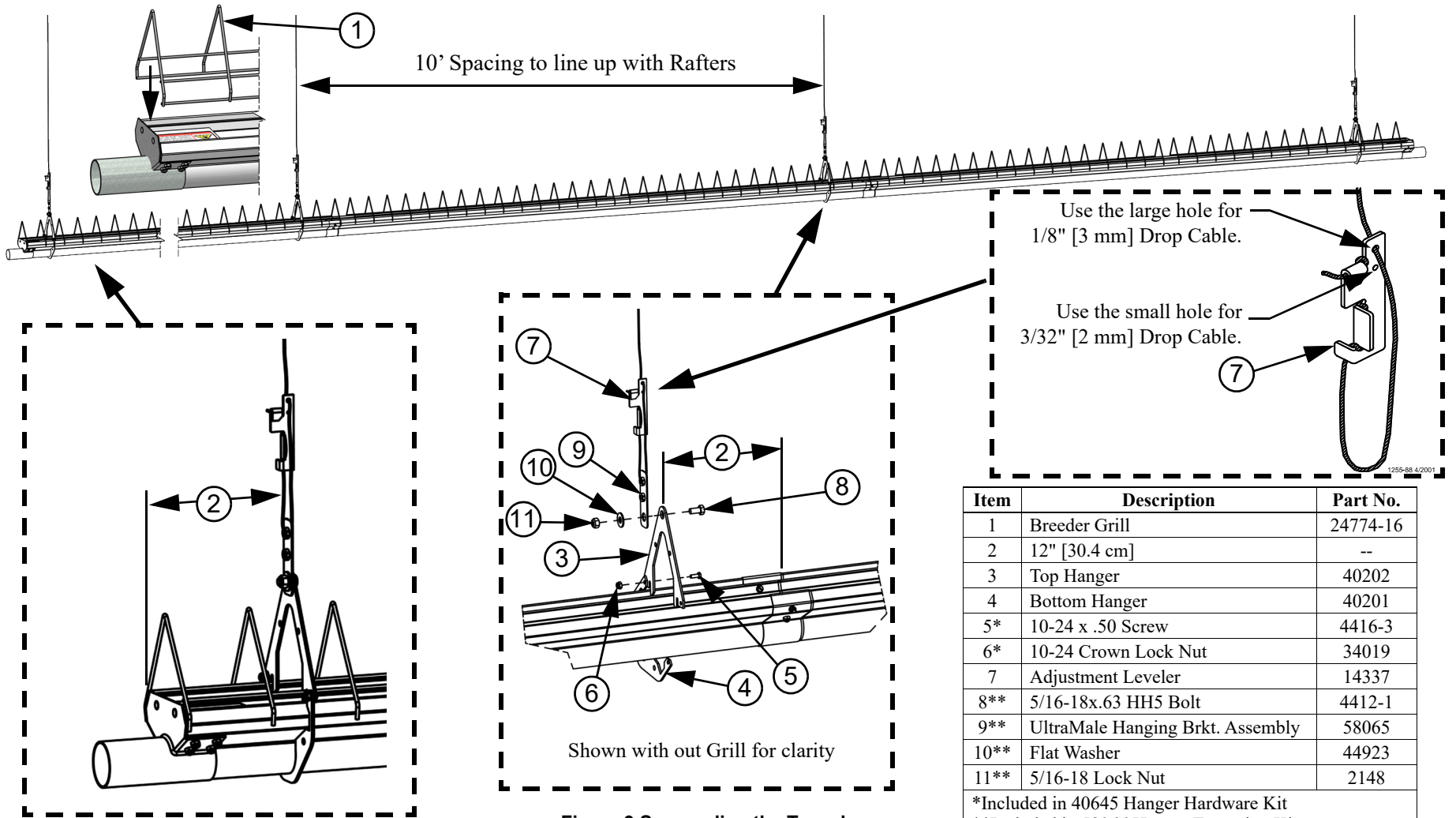


Figure 9. Suspending the Trough

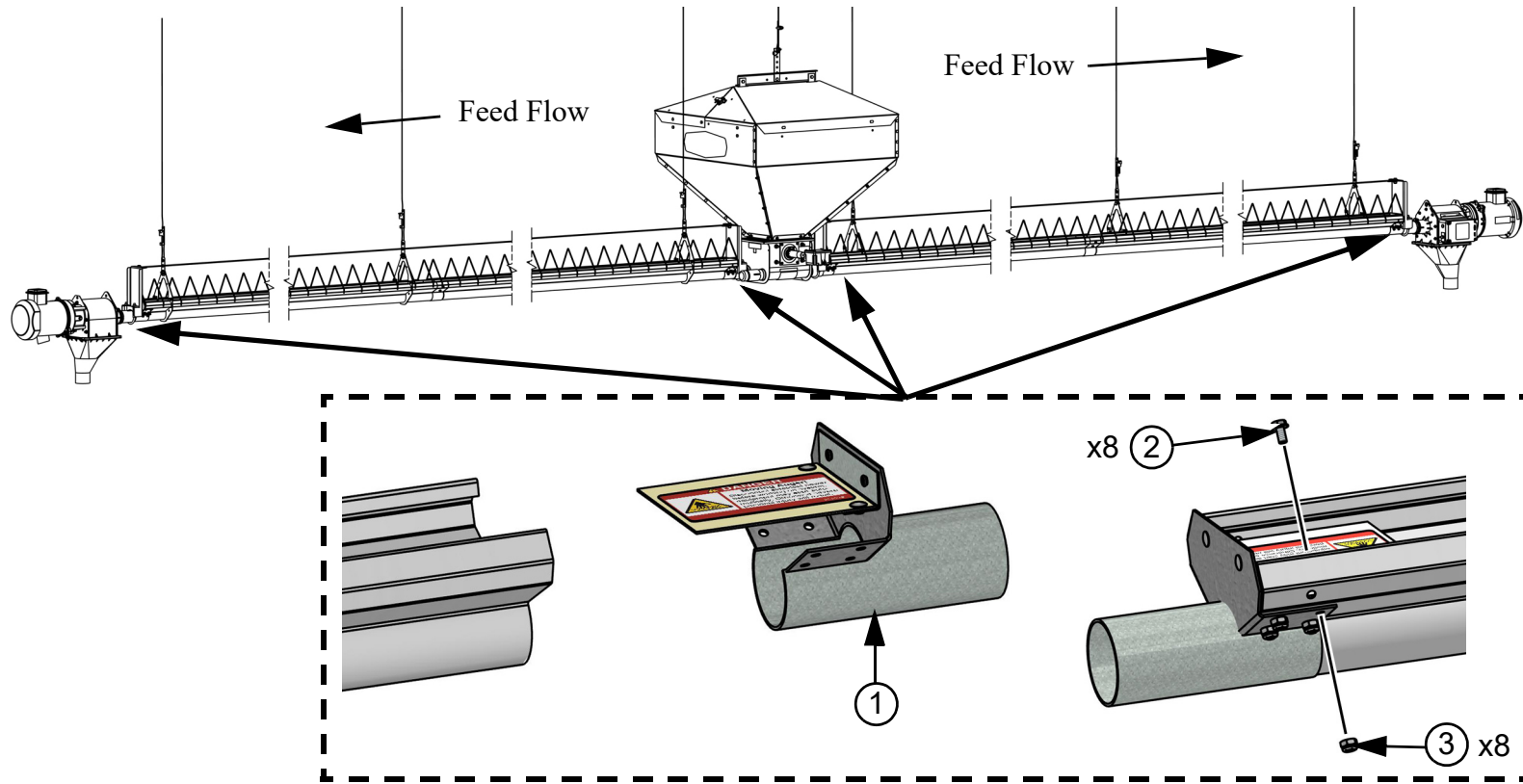
Item	Description	Part No.
1	Breeder Grill	24774-16
2	12" [30.4 cm]	--
3	Top Hanger	40202
4	Bottom Hanger	40201
5*	10-24 x .50 Screw	4416-3
6*	10-24 Crown Lock Nut	34019
7	Adjustment Leveler	14337
8**	5/16-18x.63 HH5 Bolt	4412-1
9**	UltraMale Hanging Brkt. Assembly	58065
10**	Flat Washer	44923
11**	5/16-18 Lock Nut	2148

*Included in 40645 Hanger Hardware Kit
 **Included in 58066 Hanger Extension Kit

14 End Caps

Boot, and Hangers shown for reference only; Do not install or suspend at this time. Example shown with Hopper in Center. Installation is the same for Hopper at the end.

1. Install End Cap Assemblies (**Item 1**) at the ends of the Trough where the Trough attaches to the End Control Unit (**Item 2**) and to the Boot (**Item 3**).
2. Trough Sections should be installed so that Feed flows from Non-Belled End toward the Belled end.
3. Fasten Trough sections together with #10-24 Machine Screws (**Item 2**) and 10-24 Lock Nuts (**Item 3**).



Item	Description	Part No.
1	End Cap Assembly	25169
2	10-24 x .375 HXWH Screw	25124
3	10-24 Crown Lock Nut	34019

Figure 10. End Caps

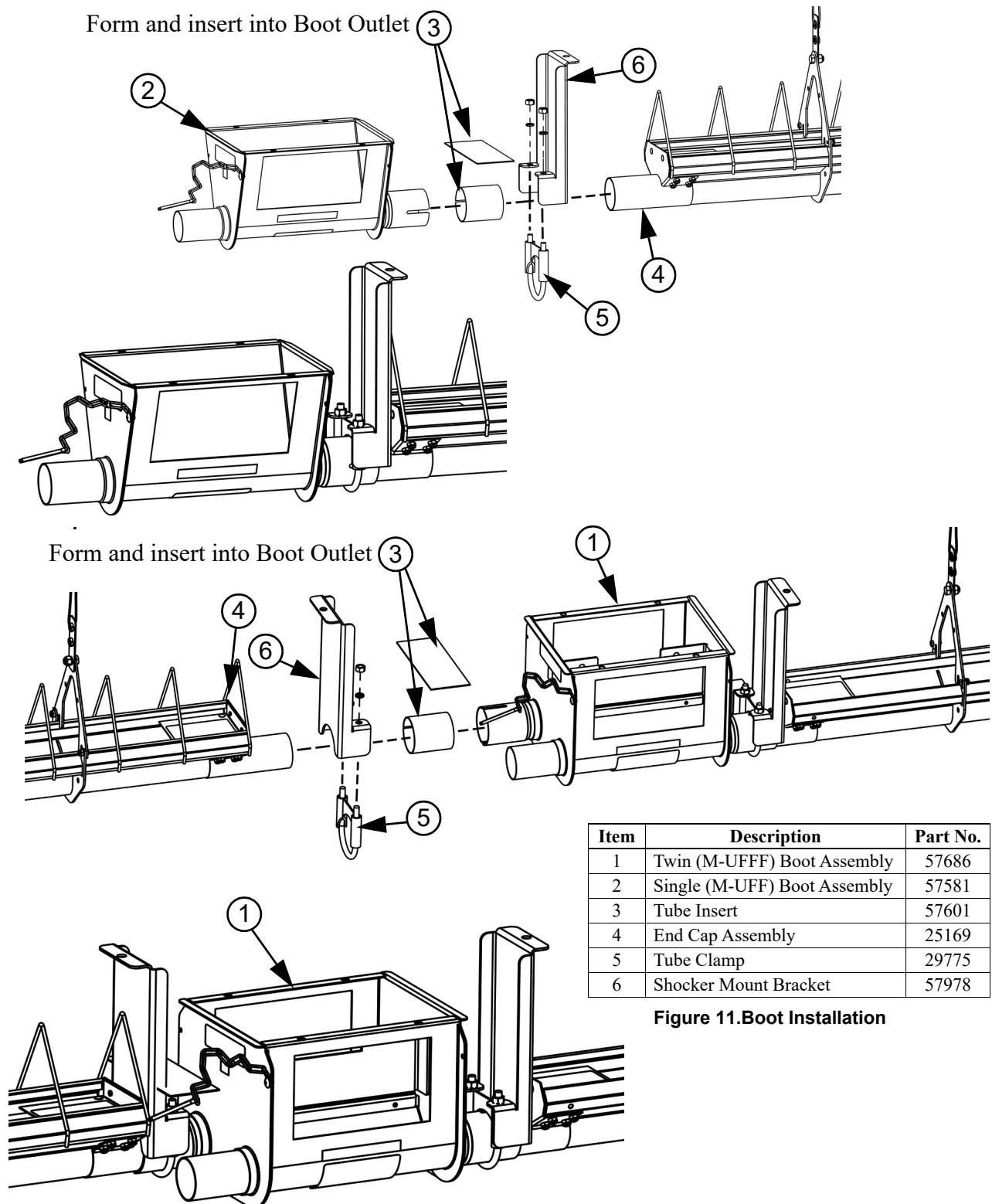
Installing the Boot

1. Insert Tubes (Item 3) Must be formed and inserted into the Boot outlets as shown.

Important! Feed direction arrows are located on the Boots for proper orientation.

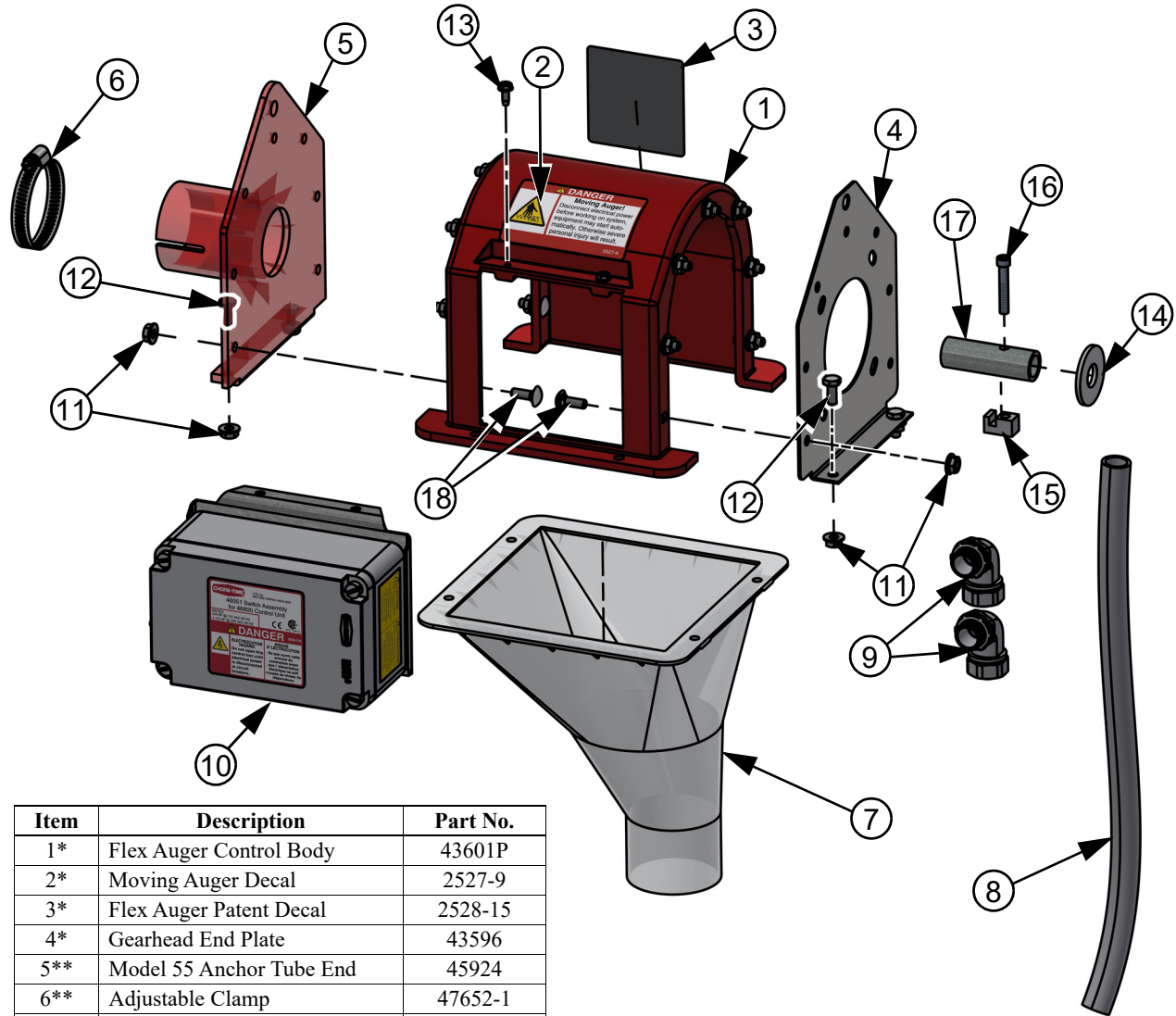
2. Fasten the Boot (Item 1 or 2) to the to the End Cap Assemblies (Item 4) using Shocker Mount Brackets (Item 6) and Tube Clamps (Item 5).

Note: There is an extra Insert Tube (Item 3). It is to be used at the Control Unit end.



Assembling the Control Unit (46800-1)

1. Assemble the Control Unit as shown.
2. Leave the Flex Auger Control Switch (Item 10) off for now. It will be installed later.



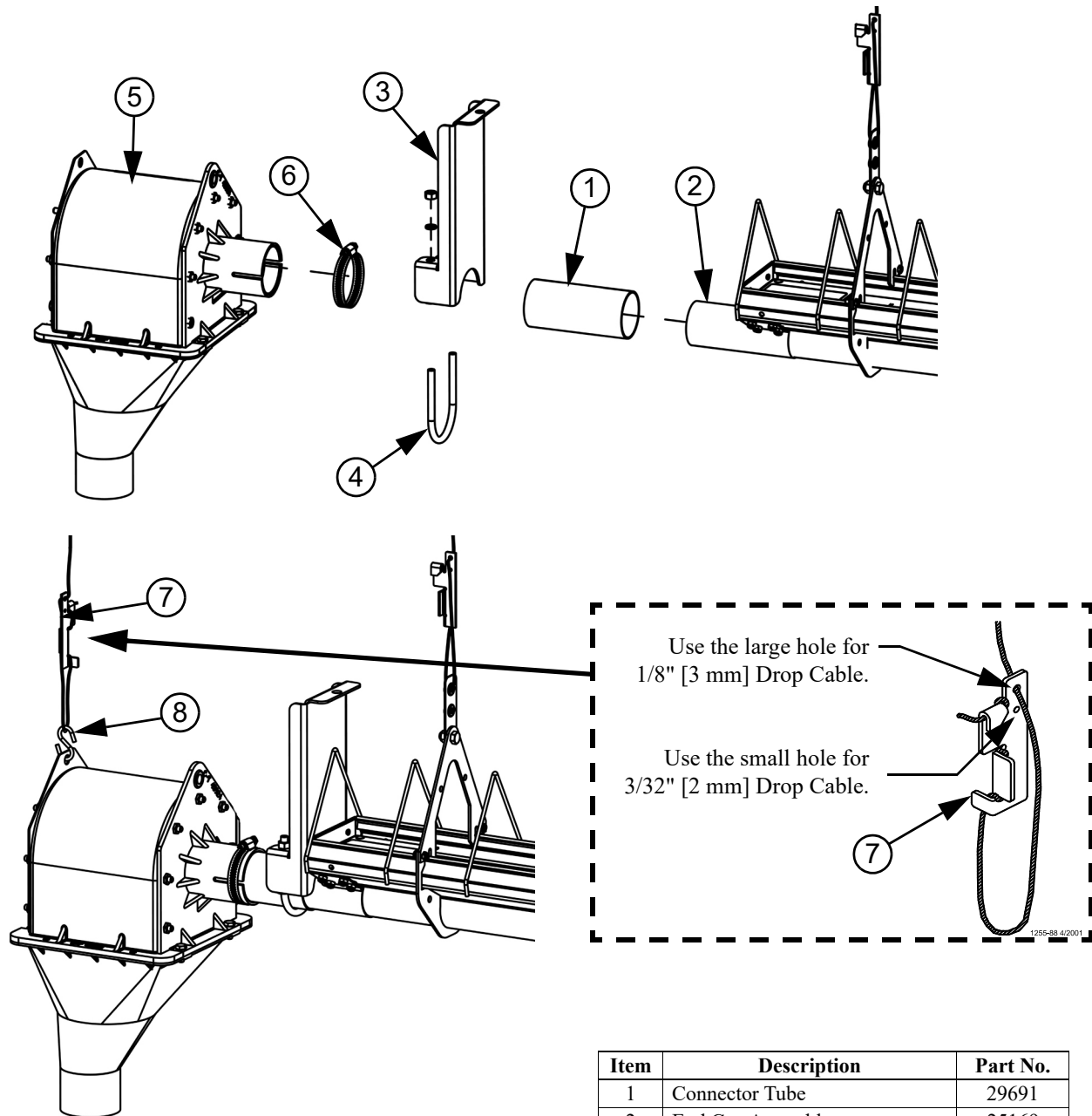
Item	Description	Part No.
1*	Flex Auger Control Body	43601P
2*	Moving Auger Decal	2527-9
3*	Flex Auger Patent Decal	2528-15
4*	Gearhead End Plate	43596
5**	Model 55 Anchor Tube End	45924
6**	Adjustable Clamp	47652-1
7**	Control Unit Funnel	45943-1
8**	Non Metallic Flex Conduit	26982-10
9**	1/2" Liquid Tight Connector	23810
10*	Flex Auger Control Switch	46051F
11***	1/4-20 Hex Flange Nut	46460
12***	1/4-20 x .63 Bolt	2152
13***	#10 x .5 HXWH Screw	28075
14 ¹	.688 x 1.750 x .134 Washer	1484
15 ¹	Driver Block	4642
16 ¹	1/4-20 x 1.5 Cap Screw	5083-8
17 ¹	Driver Tube	2920
18 ²	56561-14	7550-2

*Included in 47869-1 Control Unit Body Package
 **Included in 47870-1
 ***Included in 56562 Hardware Package
¹ Included in 46458 Parts Package
² Included in 56561-14 Parts Package

Figure 12. Control Unit Assembly

Installing the Control Unit

1. Install a Connector Tube (**Item 1**) on the end of the End Cap Assembly (**Item 2**) as shown.
2. Install a Shocker Mount Bracket (**Item 3**) onto the Connector Tube using a Tube Clamp (**Item 4**).
3. Slide the Control Unit (**Item 5**) onto the Connector Tube and fasten with an Adjustable Clamp (**Item 6**).
4. Install a Cable Drop using an Adjustment Leveler (**Item 7**) and an S-Hook (**Item 8**).



Item	Description	Part No.
1	Connector Tube	29691
2	End Cap Assembly	25169
3	Shocker Mount Bracket	57978
4	Tube Clamp	29775
5	Control Unit	46800-16
6	Adjustable Clamp	47652-1
7	Adjustment Leveler	14337
8	9 Ga. S Hook	2805

Figure 13. Control Unit Installation

MF2520A Auger Installation

Use extreme caution when working with the Auger. The Auger is under tension and may spring causing injury. Always wear protective clothing and protective glasses when working with the Auger.

Use extreme caution when pushing the Auger into the Auger Tubes. Keep your hands away from the end of the Auger tube to avoid injury.

Handle the FLEX-AUGER carefully. Dropping the rolls of Auger may cause the Auger to kink. Do not install an Auger that has a sharp kink in it. The kink will cause the Auger to wear a hole in the tube at that spot. If the kink cannot be straightened with pliers, the kink must be cut out and the Auger brazed back together. Refer to “Auger Brazing/Filing” on page 21 in this manual for the correct brazing procedure.



Use caution when working with the Auger--springing Auger may cause personal injury.

Single Boot Version shown. Install is the same for Twin Boot Install.

1. Beginning at the Boot, push the Auger into the Auger Tube through the rear of the Boot until the Auger reaches the Control Unit end.
 Use extreme caution when pushing the Auger into the Auger tubes. Keep your hands away from the end of the Auger Tube to avoid injury.

2. Attach the Auger (Item 1) to the Driver as shown.

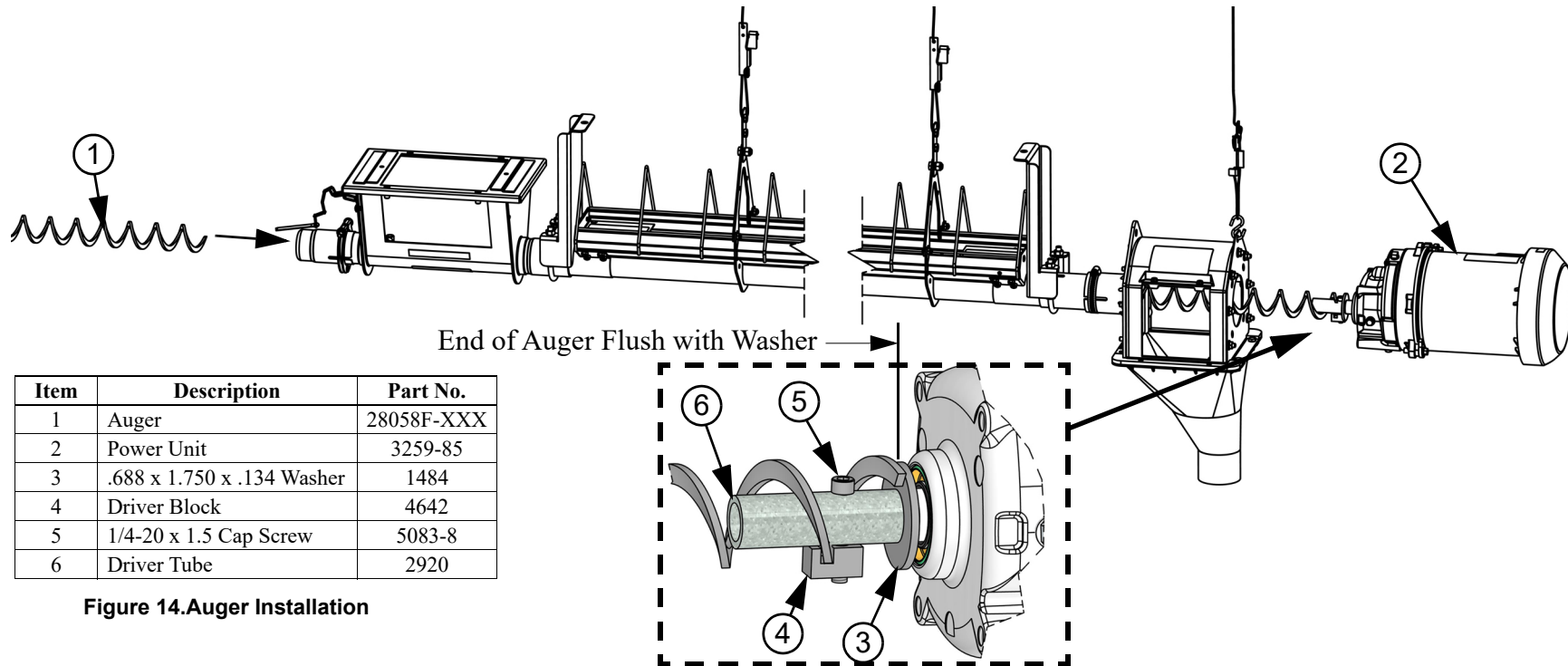
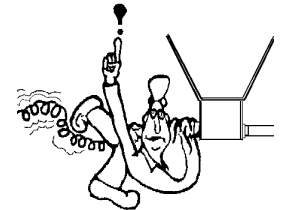
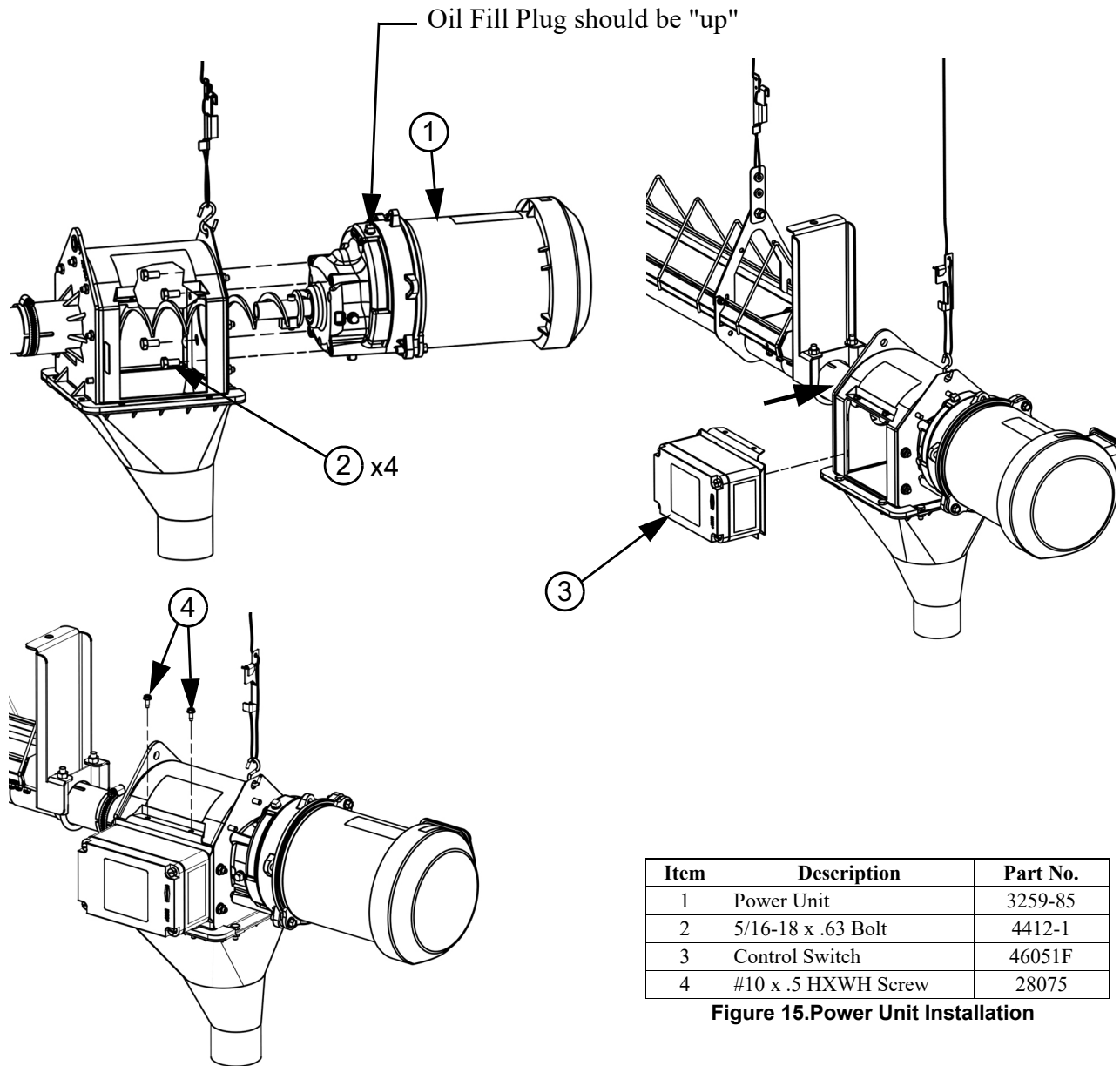


Figure 14. Auger Installation

Attaching Power Unit

1. Attach the Power Unit (**Item 1**) to the Control Unit with (4) 5/16-18 x .63 Bolts (**Item 2**).
2. Install the Control Switch (**Item 3**) using two #10 x .5 HXWH Screws (**Item 4**) as shown.



Item	Description	Part No.
1	Power Unit	3259-85
2	5/16-18 x .63 Bolt	4412-1
3	Control Switch	46051F
4	#10 x .5 HXWH Screw	28075

Figure 15. Power Unit Installation

Cutting Anchor Tube for Maximum Feed Volume

1. For Maximum Feed Volume, cut the Anchor Tube as shown in (Figure 16) below.

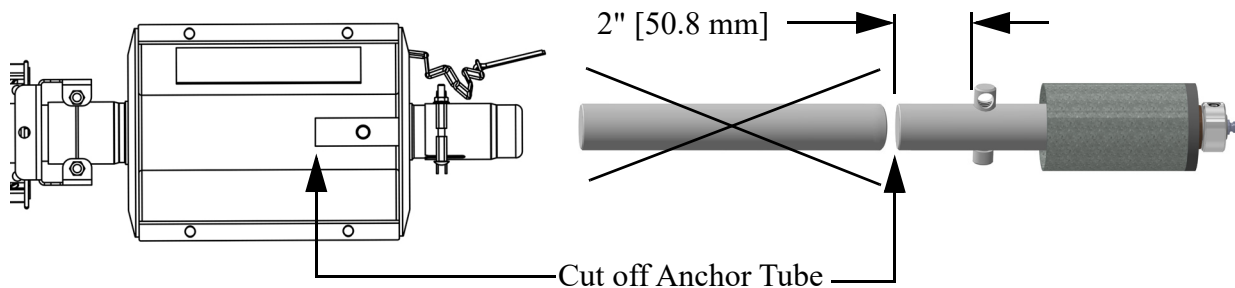


Figure 16. Cutting Anchor Tube

Auger Stretch



Use caution when working with the Auger--springing auger may cause personal injury.

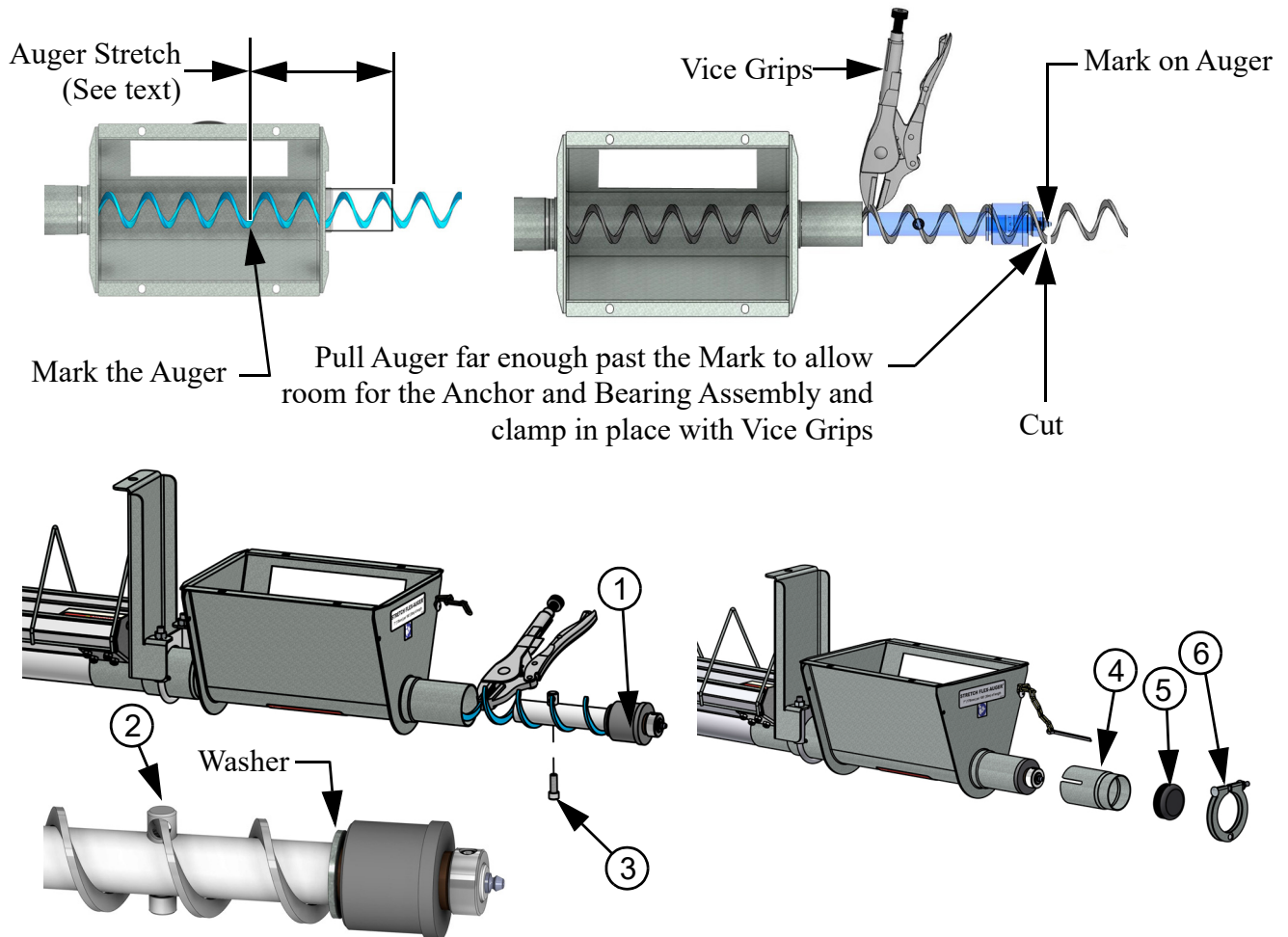
Stretch the Auger 7" [180 mm] per 100' [30 m]. Example: A 300' [90 m] feeder line requires 21" [500 mm] of stretch. Measure the amount of stretch from the rear edge of the Boot and cut the Auger at that point. (See Figure 17.)

1. Pull on the loose end of the Auger at the Boot once or twice until it begins to stretch, then release it slowly. This will bring the Auger to its natural length.
2. Measure and mark the Auger at the point where it is to be cut (See Auger Stretch above).
3. Pull the Auger until the Mark is out far enough to allow for the Anchor and Bearing Assembly (Item 1) to be installed and use Vice Grips to hold the Auger in place as shown.
4. Cut the Auger at the Mark.
5. Insert the Auger over the Anchor and feed it through the Auger Clamp Pin (Item 2) until the Auger touches the Washer on the Anchor and Bearing Assembly. Tighten the Auger Clamp Screw (Item 3) to 10-12 ft.-lbs.
Note: Over tightening the Set Screw may cause damage to the Auger Clamp.



Use caution when working with the Auger--springing Auger may cause personal injury

6. Carefully remove the Vice Grips to allow the Auger to snap into place.
7. Install the Stub Tube (Item 4), Cap (Item 5), and Tube Clamp (Item 6) as shown.



Item	Description	Part No
1	Anchor and Bearing Assembly	39408
2	Auger Clamp Pin	39205
3	5/16-18 x .875 Auger Clamp Screw	6850-6

Item	Description	Part No
4	2.016 x 3.435 Stub Tube	4163
5	2.0" Cap	29523
6	2.0" Tube Clamp	29520-1

Figure 17. Auger Installation (Stretch)

Auger Brazing/Filing

If the auger needs to be spliced or lengthened, locate the brazed joint closer to the power unit to minimize feed flow restriction in the line.

To align the auger for brazing, lay it in angle iron and clamp securely.

Rotate the auger to allow both the inside and outside edges of the augers to be brazed.

Butt the ends of the auger against each other. **DO NOT SCREW ONE AUGER INSIDE THE OTHER**--This restricts the feed flow.

(**Figure 18**) and the associated chart specify how far to lap the augers.

A bronze, flux-coated rod is recommended. The joint should be well filled and smooth so that it does not wear against the tube. Allow the joint to air cool.

File the auger edges, as shown in (**Figure 18**), to avoid damage to the auger tubes. Also, file off any brazing that extended beyond the outside radius of the auger flightings.

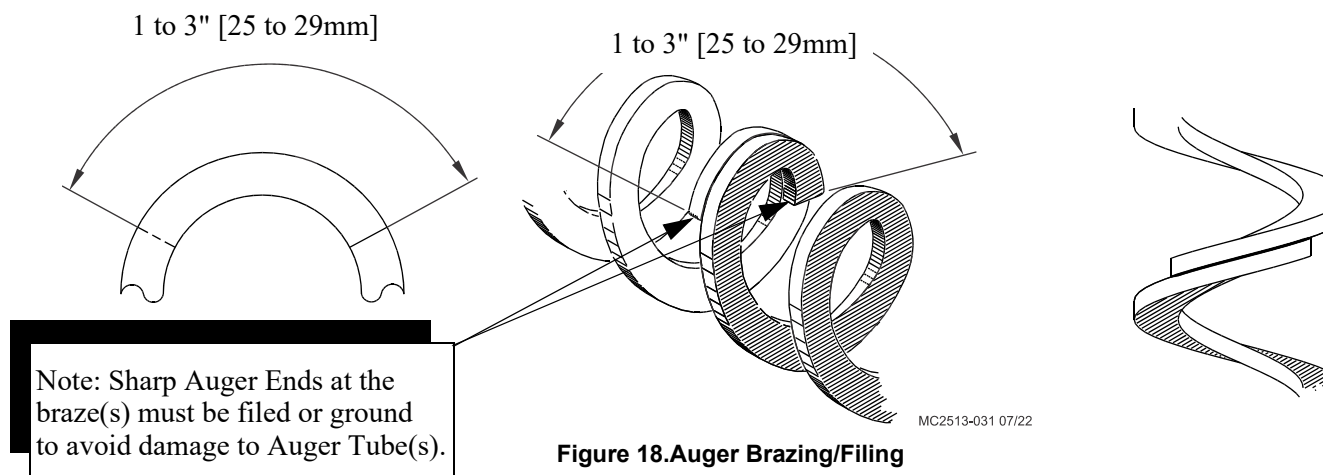
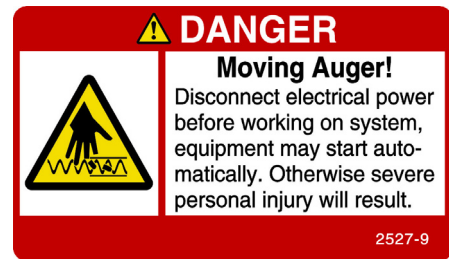
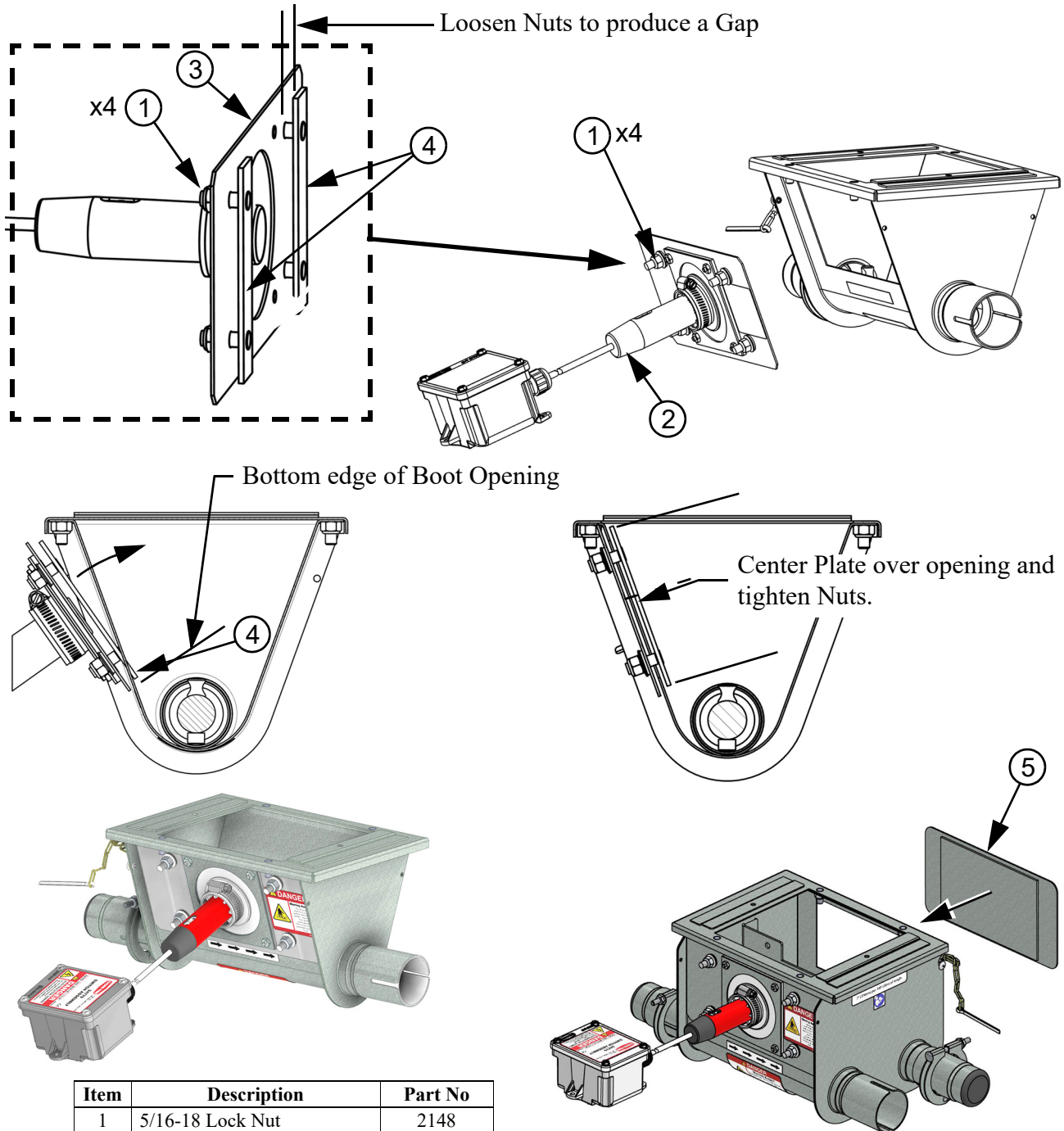


Figure 18. Auger Brazing/Filing

Proximity Switch (34479) and Clean-Out Cover Installation

1. Loosen 5/16-18 Lock Nuts (**Item 1**) on the Proximity Switch Assembly (**Item 2**) to end of studs
2. Push the Switch Assembly Cover Plate (**Item 3**) into the Boot opening allowing the Retainer Brackets (**Item 4**) to overlap the lower edge of the Boot opening.
3. Slide the Cover Plate up centering it over the opening making sure the Retainer Brackets catch the top of and the bottom of the Boot opening.
4. Hold the Cover securely while tightening the 5/16-18 Lock Nuts.
5. For Twin Boots attach the Standard Clean-Out Cover (**Item 5**) to the other opening.

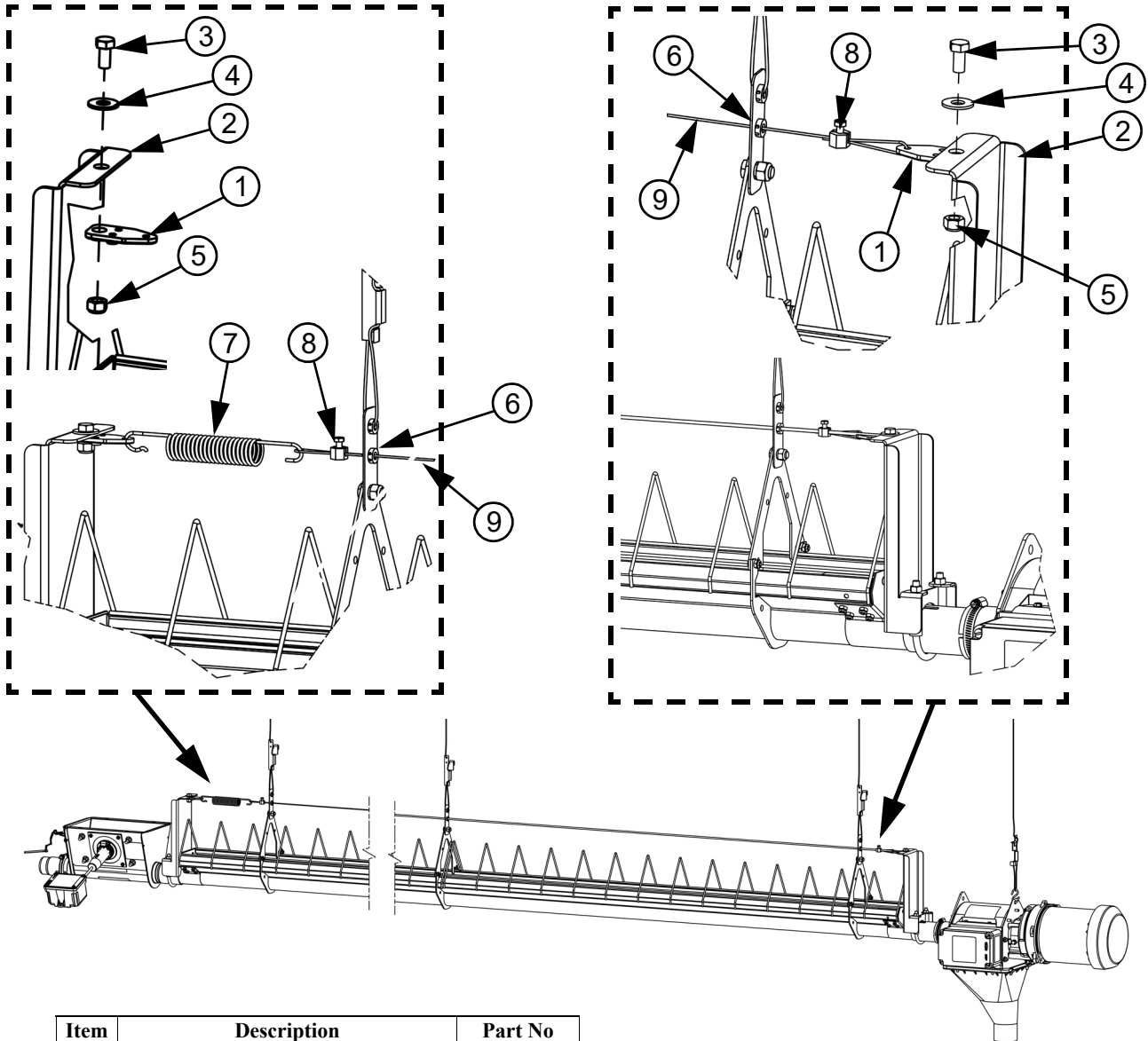


Item	Description	Part No
1	5/16-18 Lock Nut	2148
2	Proximity Switch Assembly	34779
3	Cover Plate	30941
4	Retainer Bracket	30942
5	Clean-Out	6197

Figure 19. Proximity Switch Assembly Installation

Shocker Wire Installation

1. Attach Adjustment Levelers (**Item 1**) to the Shocker Mount Brackets (**Item 2**) at each end with 5/16 Bolts (**Item 3**), Flat Washers (**Item 4**), and Lock nuts (**Item 5**) as shown.
2. At one end Loop the Cable (**Item 9**) around the Adjustment Leveler and attach the Cable to itself with a Cable Clamp Assembly (**Item 8**).
3. Thread the Cable (**Item 9**) through the holes in each of the Hanging Brackets (**Item 6**) until you get to the other end.
4. Install a Spring (**Item 7**) in the Adjustment Leveler. Loop the cable around the Spring hook, stretch the Spring to give the Cable some tension and attach it to itself with a Cable Clamp (**Item 8**) as shown.



Item	Description	Part No
1	Adjustment Leveler	3075
2	Shocker Mount Bracket	57978
3	5/16-18 x .63 HH5 Bolt	4412-1
4	Flat Washer	44923
5	5/16-18 Lock Nut	2148
6	UltraMale Hanging Brkt. Assembly	58065
7	Spring	7551
8	Cable Clamp Assembly	1826
9	1/16-1 x 7 Aircraft Cable	1922-X

Figure 20. Shocker Wire Installation

Hopper Installation

1. Install a Hopper and Hopper Scale (If required). If using a Chore-time Hopper and/or Weigh Scale, see the included Chore-time manual for installation.

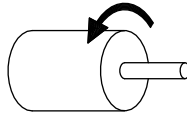
Hopper Scale Installation

1. Chore-Time recommends using a Chore-Time Hopper Scale (If required).

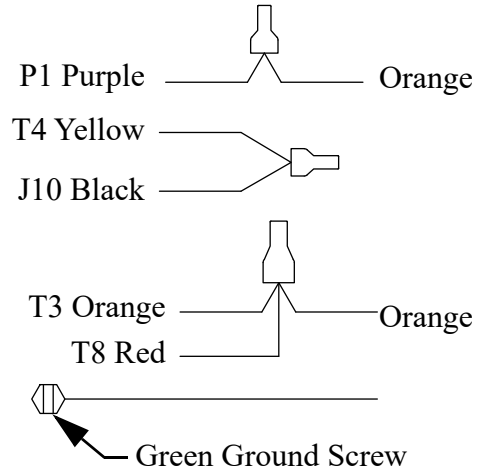
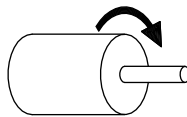
Wiring Diagrams

3259-98 Power Unit (5977 Motor)

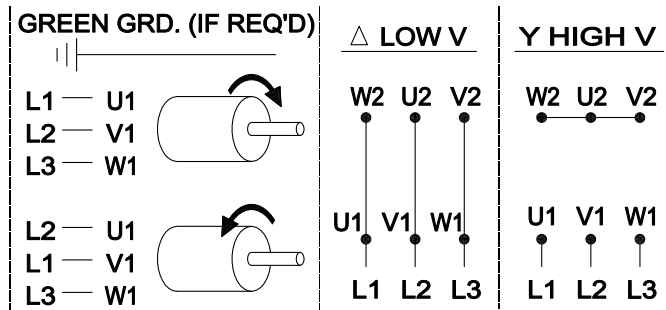
Wire as shown for Clock-wise rotation.



For Counter Clock-wise rotation switch the Red and Black Wires.



3259-134 and 3259-100 Power Units (28031 Motor) Wiring



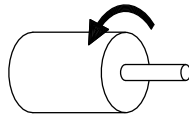
3259-39 (5703 Motor)

There are two Manufacturers of the 5703 Motor. Wiring diagrams shown for both Manufacturers

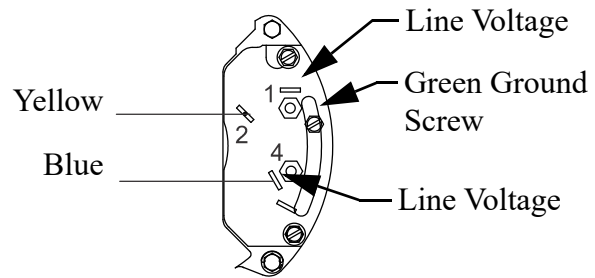
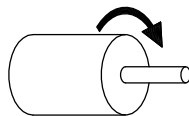
Nidec Motor Wiring

Nidec / US Motor

Wired as shown for
Clock-wise rotation

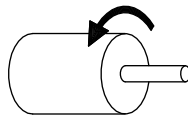


For Counter-clockwise
rotation switch the Yellow
and Blue Wires

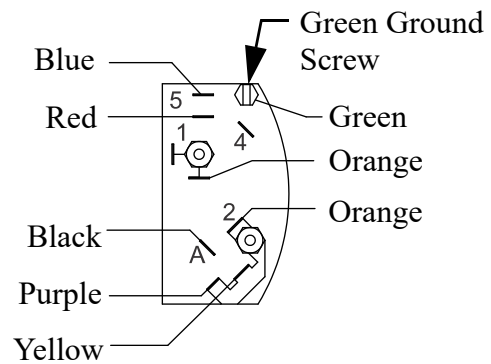
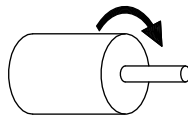


Regal Beloit / Marathon Wiring

Wired as shown for
Clock-wise rotation



For Counter-clockwise
rotation switch the Yellow
and Blue Wires



Operation

Running the system

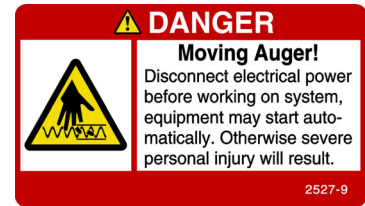
The Straight Line Feeding system can be operated manually or using a Timer. Chore-Time recommends connecting to a Chore-Tronics Control. If using a Chore-Tronics Control see the **Chore-Tronics® 3 manual MT2398** on the Chore-Time website.

1. Most applications will only require running the feeding system once a day.
2. You want to avoid dropping excess feed at the end of the system. The System is designed to run just enough feed to get to the end of the line without dumping extra feed. See **“Feed requirement chart” on page 4**

Troubleshooting

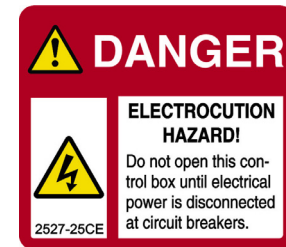
DANGER: Moving Auger

This decal is placed on the End Cap Weldment and Clean-out cover. Severe personal injury will result, if the electrical power is not disconnected, prior to servicing the equipment.



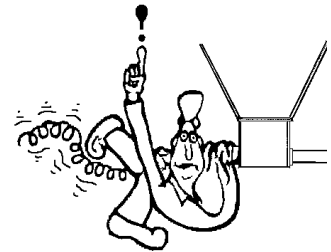
DANGER: Electrical Hazard

- Disconnect electrical power before inspecting or servicing equipment unless maintenance instructions specifically state otherwise.
- Ground all electrical equipment for safety.
- All electrical wiring must be done by a qualified electrician in accordance with local and national electric codes.
- Ground all non-current carrying metal parts to guard against electrical shock.
- Electrical disconnects and over current protection are not supplied with the equipment.



DANGER: Springing Auger

Use caution when working with Auger. Springing Auger may cause personal injury.



Motor will not run

Action: Check Wiring and Power Supply. May want to remove the Power unit and test.

Motor runs but Feed does not get delivered.

If the Feeder fails to operate, check the auger for foreign objects, water, or feed bridging. Foreign objects in the auger will cause the auger to become wedged.

1.Foreign objects in Trough

Action: Remove the object from the Auger. Check to make sure the Auger was not damaged or distorted. Replace damaged section of Auger if needed.

2.Feed Building up (Bridging) in Trough

Action: Clean stuck feed out of the Trough where it is building up (Bridging). Check for objects in Trough.

3.Feed Building up (Bridging) at Control Unit

Action: Clean excess feed out of the red plastic End Control Body. There is a Proximity Switch in the Control body that shuts the system off in the event of feed build up.

4.Feed is building up at Boot

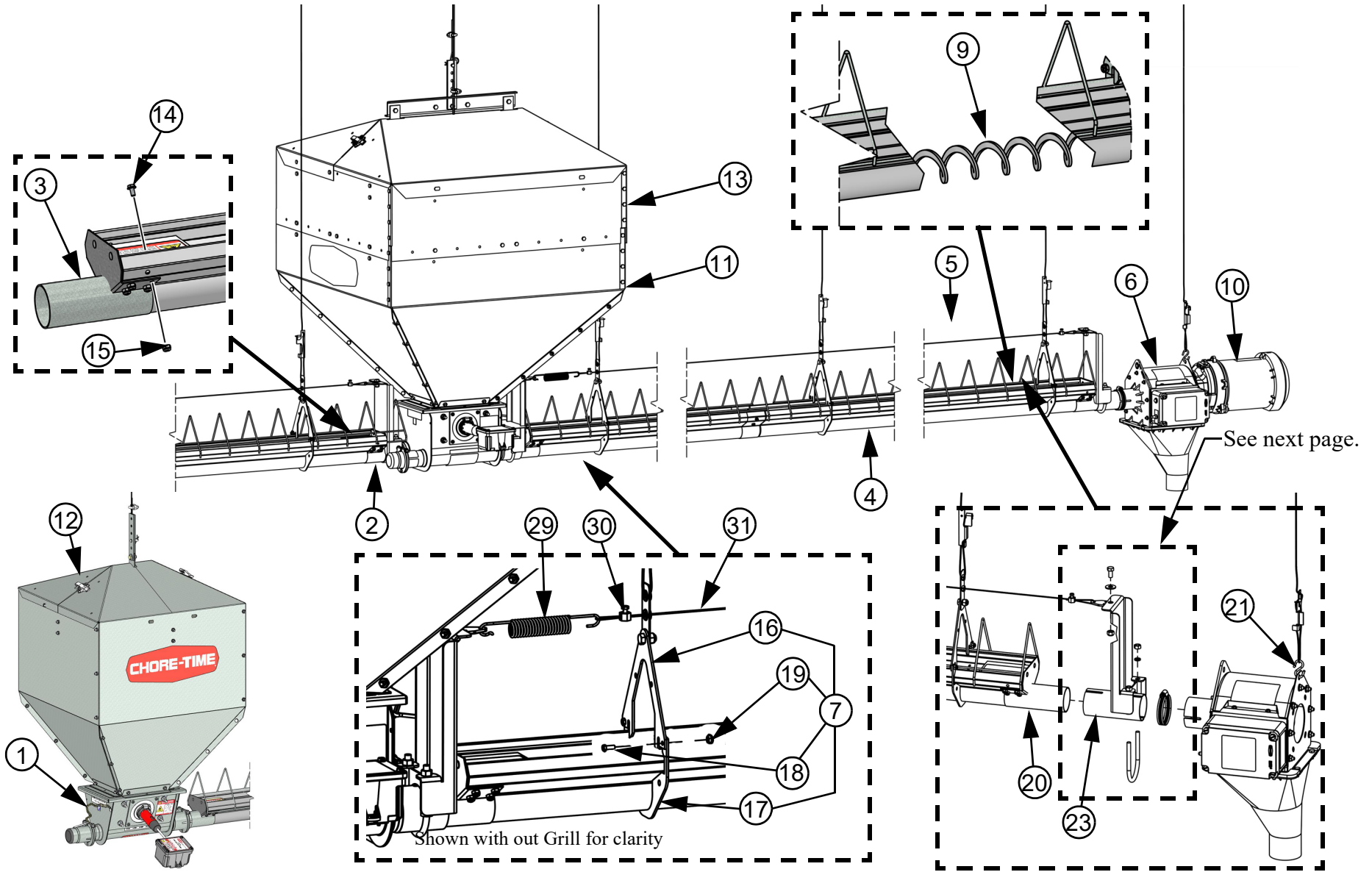
Action: Clean out excess or stuck feed in the Boot and around the Driver and Anchor.

Fill system motor overloads

Action: Clean out excess or stuck feed in the Boot and around the Driver and Anchor.

Parts Listing

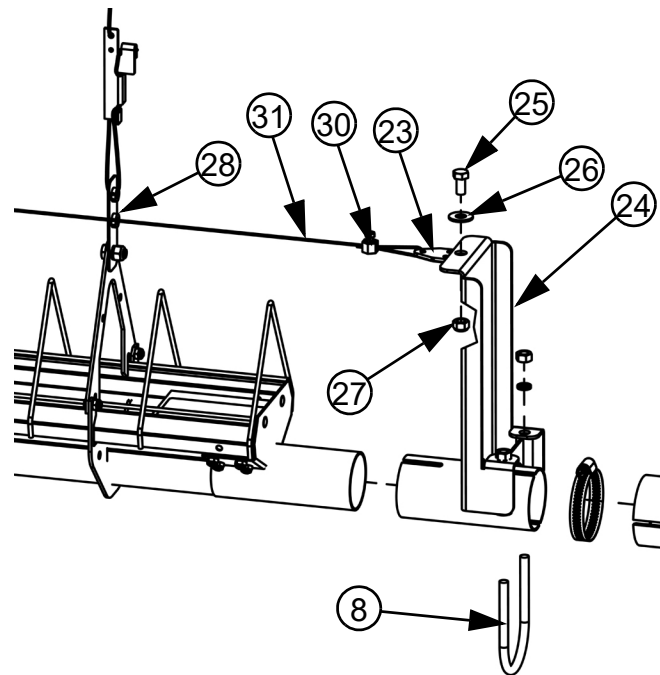
Top Level Parts



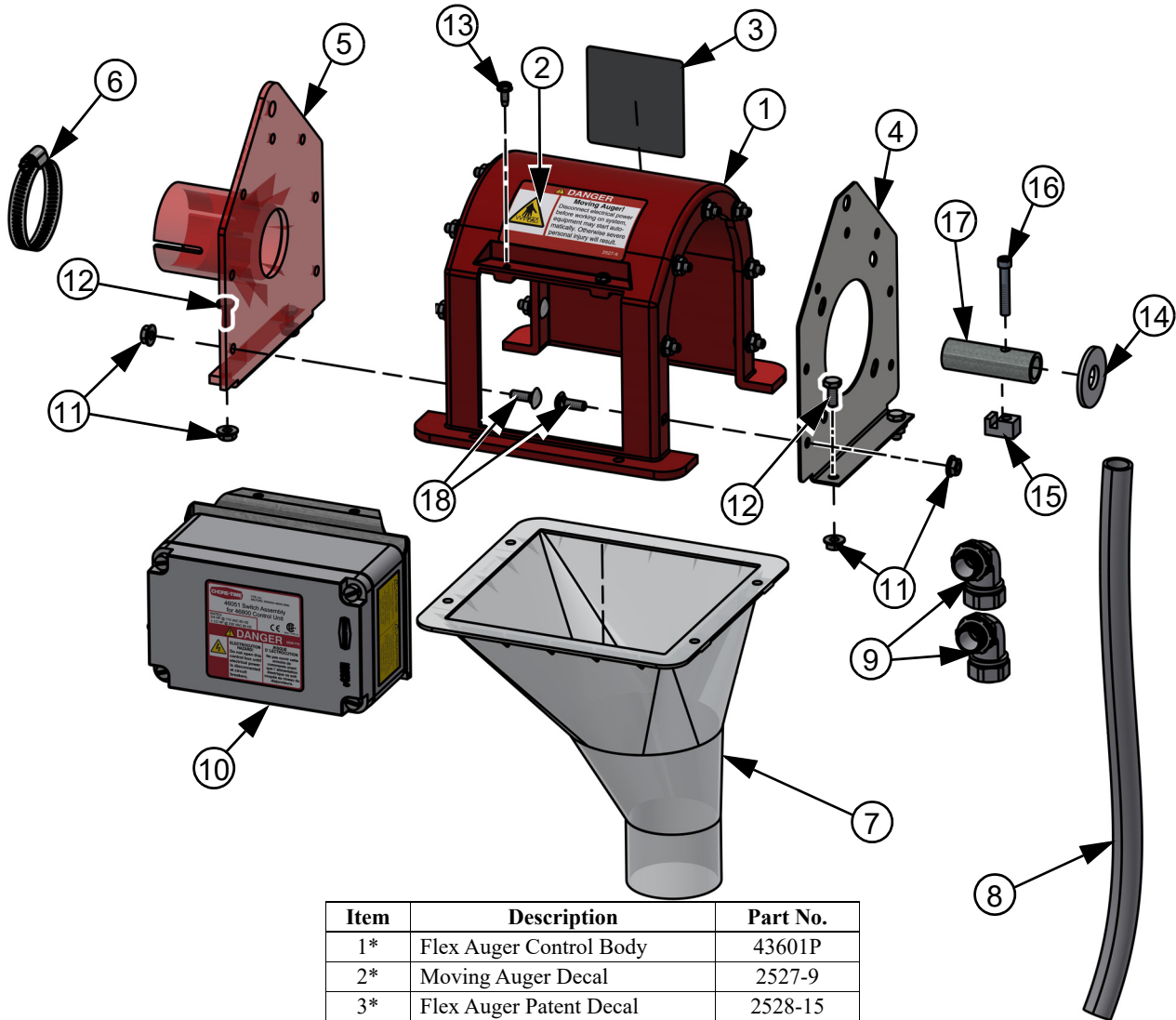
MF2520A

Itemized Parts

Item	Description	Part No.	See Page
1	Weldment Boot Body (Single)	57581	See "Single Boot Assembly (57581)" on page 32.
2	Weldment Boot Body (Double)	57686	See "Double Boot Assembly (57686)" on page 31.
3	End Cap Assembly	25169	
4	10' Breeder Feeder Trough	14159-3	
5	Breeder Grill (4" spacing)	24774-16	
6	Model 55 3 Ph Control Unit Ass'y	46800-1	See "Control Unit (46800-1)" on page 30.
7	UFBF Hanger Assembly	40573	
8	Tube Clamp Kit	29775	
9	1.75 O.D. Flex Auger	25058F-XXX	
10	.5H 3ph,50hz,220/380v Power Unit	3259-85	
11	300 lb. Hopper with Cover	28360	See Chore-Time MF891 Manual included with Hopper
12	200 lb. Hopper with Cover	7941	See Chore-Time MF843 Manual included with Hopper
13	Hopper Extension Kit	36319	
14*	10-24 x .375 HXWH Screw	25124	
15*	10-24 Crown Lock Nut	34019	
16**	Top Hanger	40202	
17**	Bottom Hanger	40201	
18**	10-24 x .50 Screw	4416-3	
19**	10-24 Crown Lock Nut	34019	
20	Adjustment Leveler	14337	
21	9 Ga. S Hook	2805	
22	Connector Tube	29691	
23	Adjustment Leveler	3075	
24	Shocker Mount Bracket	57978	
25	5/16-18 x .63 HH5 Bolt	4412-1	
26	Flat Washer	44923	
27	5/16-18 Lock Nut	2148	
28	UltraMale Hanging Brkt. Assembly	58065	
29	Spring	7551	
30	Cable Clamp Assembly	1826	
31	1/16-1 x 7 Aircraft Cable	1922-X	
*Included in 25169 Hardware Kit			
**Included in 40573 Hanger Assembly			

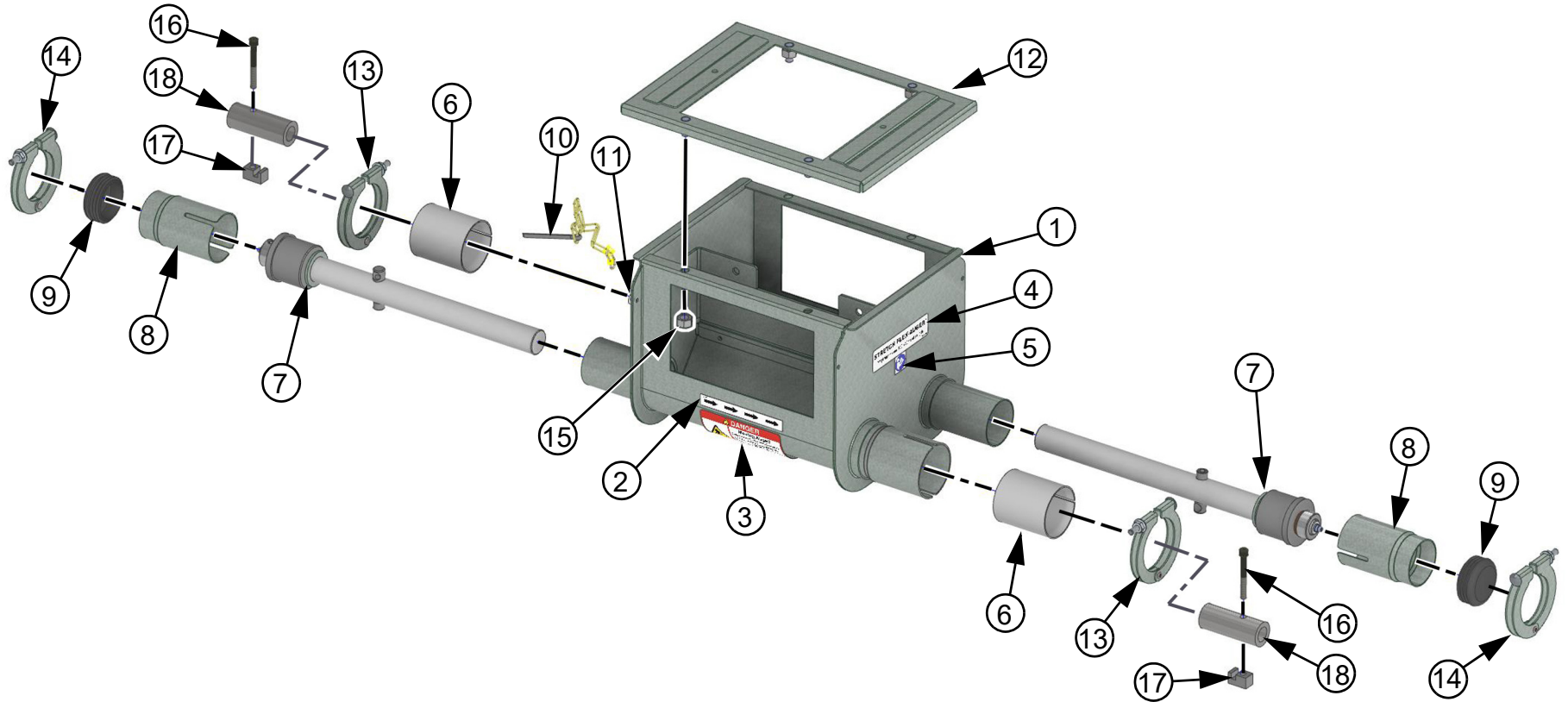


Control Unit (46800-1)



Item	Description	Part No.
1*	Flex Auger Control Body	43601P
2*	Moving Auger Decal	2527-9
3*	Flex Auger Patent Decal	2528-15
4*	Gearhead End Plate	43596
5**	Model 55 Anchor Tube End	45924
6**	Adjustable Clamp	47652-1
7**	Control Unit Funnel	45943-1
8**	Non Metallic Flex Conduit	26982-10
9**	1/2" Liquid Tight Connector	23810
10*	Flex Auger Control Switch	46051F
11***	1/4-20 Hex Flange Nut	46460
12***	1/4-20 x .63 Bolt	2152
13***	#10 x .5 HXWH Screw	28075
14 ¹	.688 x 1.750 x .134 Washer	1484
15 ¹	Driver Block	4642
16 ¹	1/4-20 x 1.5 Cap Screw	5083-8
17 ¹	Driver Tube	2920
18 ²	56561-14	7550-2
*Included in 47869-1 Control Unit Body Package		
**Included in 47870-1		
***Included in 56562 Hardware Package		
¹ Included in 46458 Parts Package		
² Included in 56561-14 Parts Package		

Double Boot Assembly (57686)

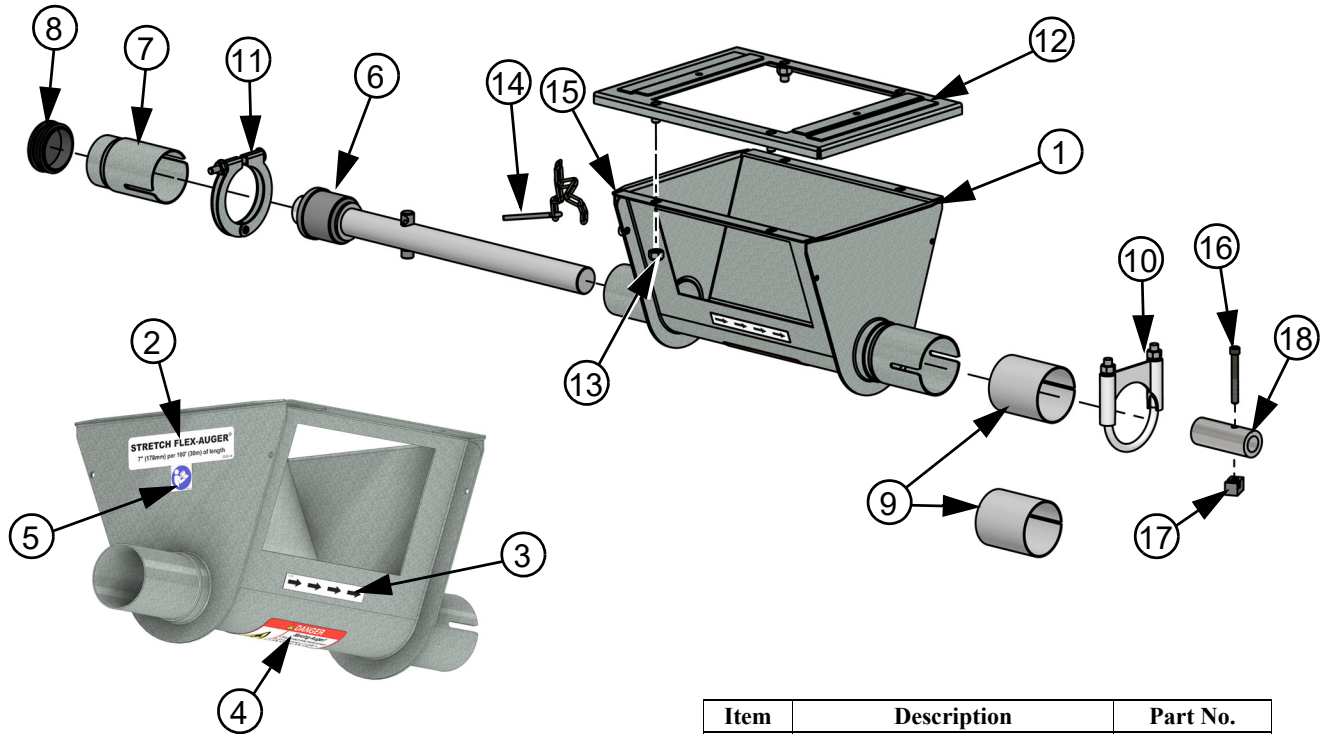


Item	Description	Part No.
1	Weldment Boot Body	35936F
2	Posiflo Input Shaft Decal	2526-76
3	Danger Moving Auger Decal	2527-9
4	Stretch Auger Decal	2526-14
5	Read the Manual Decal	2527-91
6	Insert Tube	57601
7	Anchor and Bearing Assembly	57685
8	2.016 x 3.435 Stub Tube	4163
9	2.0 O.D. Cap	29523

Item	Description	Part No.
10	Latch Pin Assembly	2683
11	Drive Rivet	4200U
12	Adapter Plate Weldment	57656
13	Model 55 Clamp Assembly	35726-1
14	2" Clamp Assembly	29520-1
15	5/16-18 Lock Nut	2148
16*	.25-20x2 SKTH Cap Screw	5083-4
17*	Block Driver	4642
18*	Drive Tube	30932

*Included in 30931 Drivers Parts Package

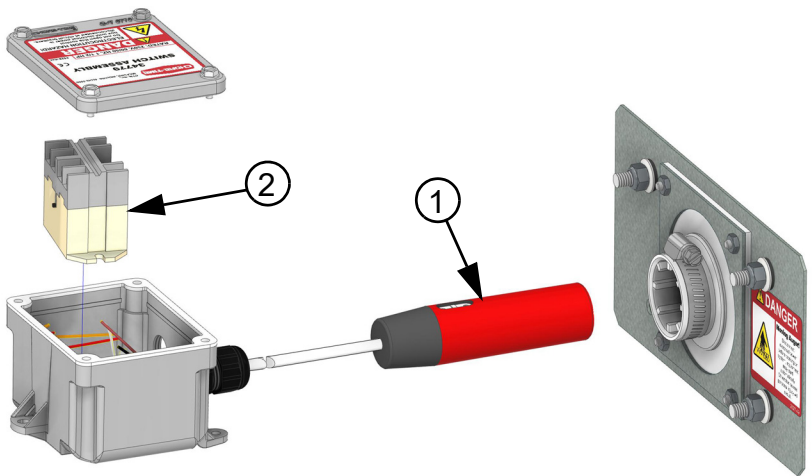
Single Boot Assembly (57581)



Item	Description	Part No.
1	Weldment Boot Body	57682F
2	Stretch Auger Decal	2526-14
3	Posiflo Input Shaft Decal	2526-76
4	Danger Moving Auger Decal	2527-9
5	Read the Manual Decal	2527-91
6	Anchor and Bearing Assembly	39408
7	2.016 x 3.435 Stub Tube	4163
8	2.0 O.D. Cap	29523
9	Insert Tube	57601

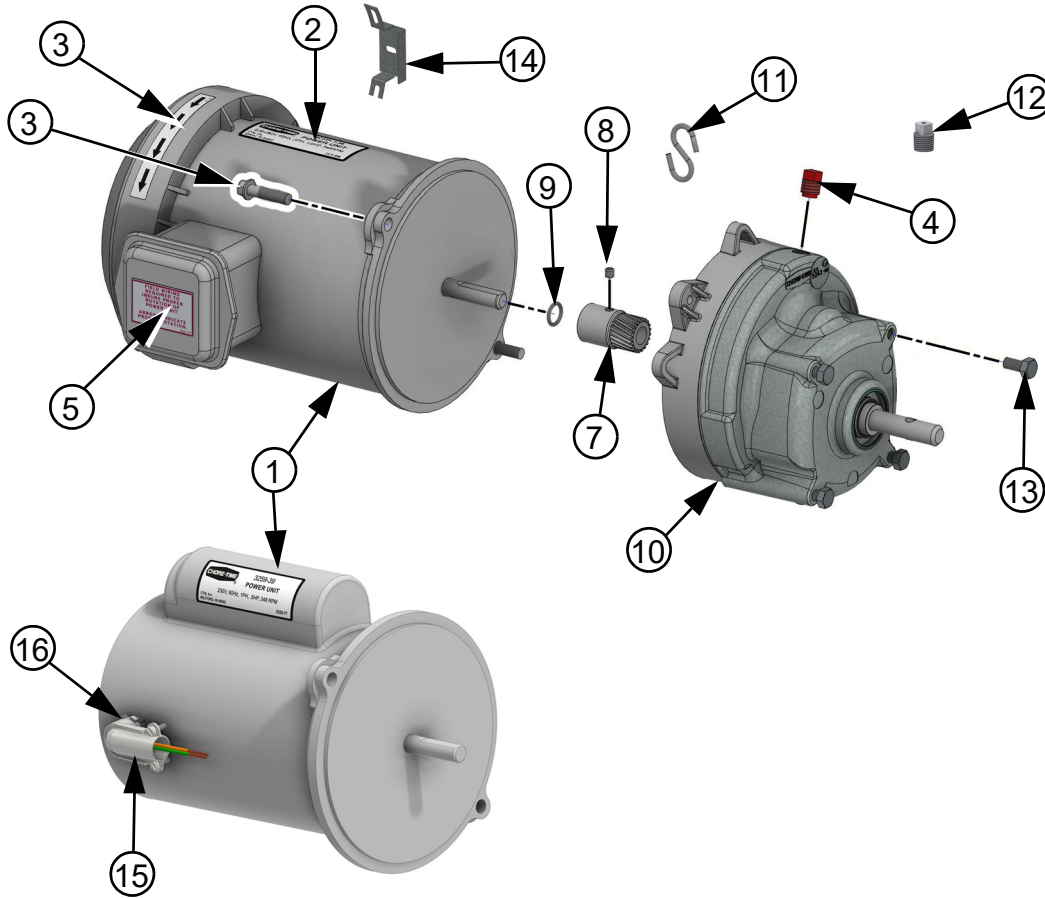
Item	Description	Part No.
10	Model 55 Clamp Assembly	35726-1
11	2" Clamp Assembly	29520-1
12	Adapter Plate Weldment	57656
13	5/16-18 Lock Nut	2148
14	Latch Pin Assembly	2683
15	Drive Rivet	4200U
16*	.25-20x2 SKTH Cap Screw	5083-4
17*	Block Driver	4642
18*	Drive Tube	30932
*Included in 30931 Drivers Parts Package		

Flag & Twin Boot Proximity Switch (34779)



Item	Description	Part No.
1	On Delay Sensor	34255
2	DPST 200/400V Coil Relay	34654

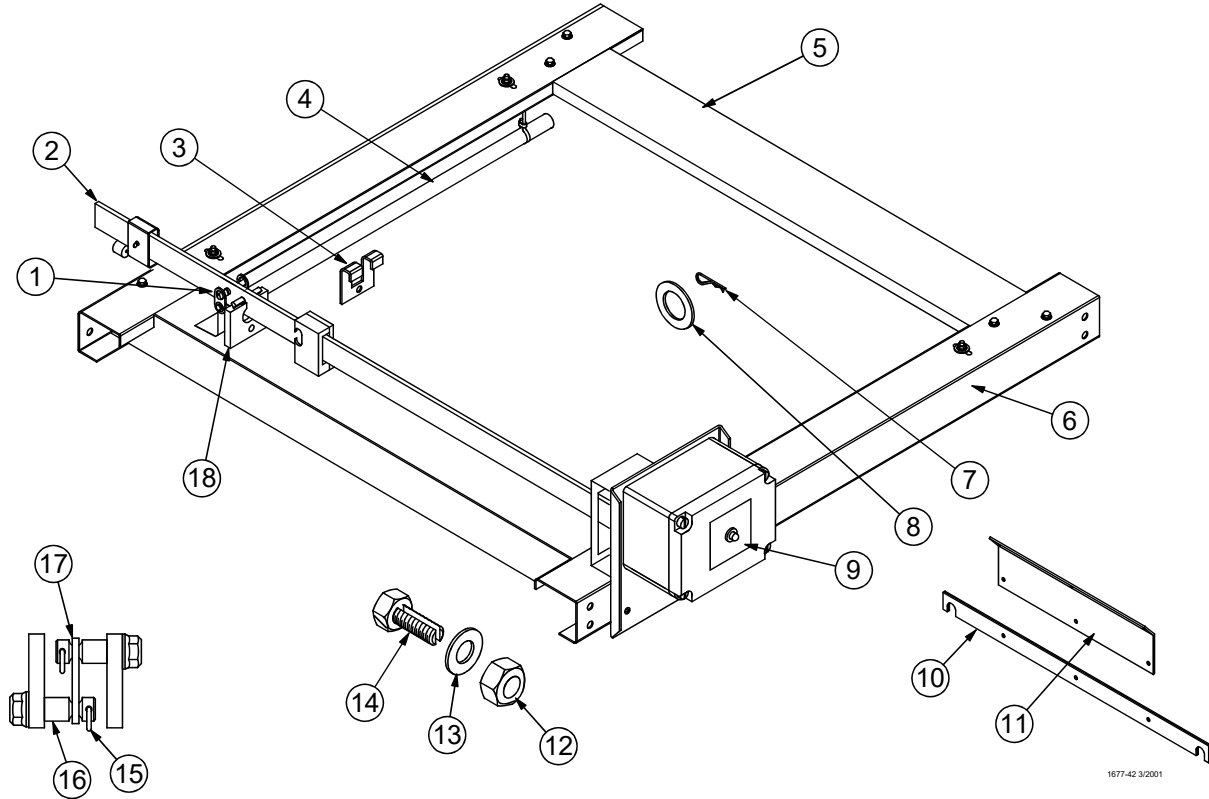
Power Unit Assembly



		Power Unit Assembly Part Numbers			
		3259-98	3259-134	3259-39	3259-100
		1/2HP, 1PH, 50Hz, 220/240V, 348 RPM	1/2HP, 3PH, 60Hz, 220/380V, 348 RPM	1/2HP, 1PH, 60Hz, 230V	
Item	Description	Part No.			
1	1/2 HP,3PH,60Hz,220/380V Motor	--	28031EUR	--	--
	1/2 HP,3PH,50Hz,220/240V Motor	5977	--	--	--
	1/2 HP,1PH,60Hz,230V Motor	--	--	5703	--
	1/2 HP,3PH,50Hz,220/380V Motor				28031EUR
2	Power Unit Decal	2529-312	2529-629	2529-77	2529-315
3	5/16-18 x 1.25 Hx WH Screw	38163	38163	38163	38163
4	Pipe Plug	3516	3516	3516	3516
5	Field Wiring Decal	--	2526-195	--	2526-195
6	Rotation Decal	--	2526-76	--	2526-76
7	Pinion 348 RPM	5052	5052	5052	5052
8	1-4-28 x .25 Set Screw	5362	5362	5929	5362
9	O-Ring	3209	3209	3209	3209
10	Gearhead Assembly	3261-11	3261-5	3261-5	3261-11
11*	S-Hook	2805	2805	2805	2805
12*	.25 Pipe Plug (Replaces Item 4)	3523	3523	3523	3523
13*	5/16-18 x .63 Bolt	4412-1	4412-1	4412-1	4412-1
14	Motor Shield	36513	--	6815	--
15	90° Connector	--	--	4228	--
16	1/2" Conduit Locknut	--	--	3357	--

*Included in 50221-3 Hardware Package

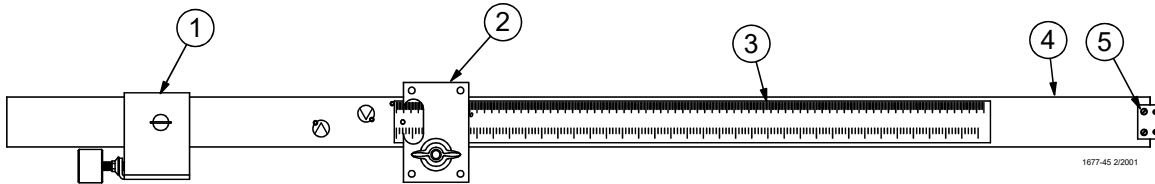
Hanging Scale Part Number 46280



Item	Description	Part No.
1	Transfer Loop	46243
2	Beam Bar Assembly	46279
3	Bar Retainer	46257
4	Support Tube	46270
5	Scale End Frame	46248
6	Scale Side Frame	46247
7	Hair Pin	2664
8	7/8" Flat Washer	2955-14
9	Switch Assembly	46273
10	Support Bar	46251

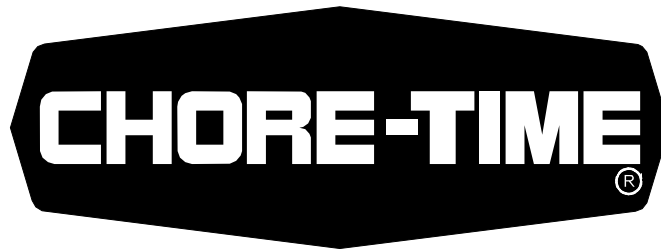
Item	Description	Part No.
11	Hopper Support Adapter	46250
12	3/8" Hex Nut	1549
13	3/8" Flat Washer	4967
14	3/8" Split Bolt	6342
15	Hair Pin	13906
16	Bar Pivot Bearing (short)	46263
17	Pivot Shackle	46254
18	Main Pivot Block	46265
—	Bar Pivot Bearing (long)	46264

Beam Bar Assembly Part Number 46279



Item	Description	Part No.
1	Counter Weight Assembly	46261
2	Poise Assembly	46268
3	Beam Bar Decal	2529-401
4	Machined Beam Bar	46249
5	Actuator Magnet	5789

This page left blank intentionally.....



MADE TO WORK.

BUILT TO LAST.®

Revisions to this Manual

Page No.	Description of Change	ECO
	New Manual	40312

Contact your nearby Chore-Time distributor or representative for additional parts and information.

CTB, Inc.
PO Box 2000
Milford, Indiana 46542-2000 USA
Phone (574) 658-4101 Fax (877) 730-8825
Email: choretime@choretime.com
Internet: www.choretime.com